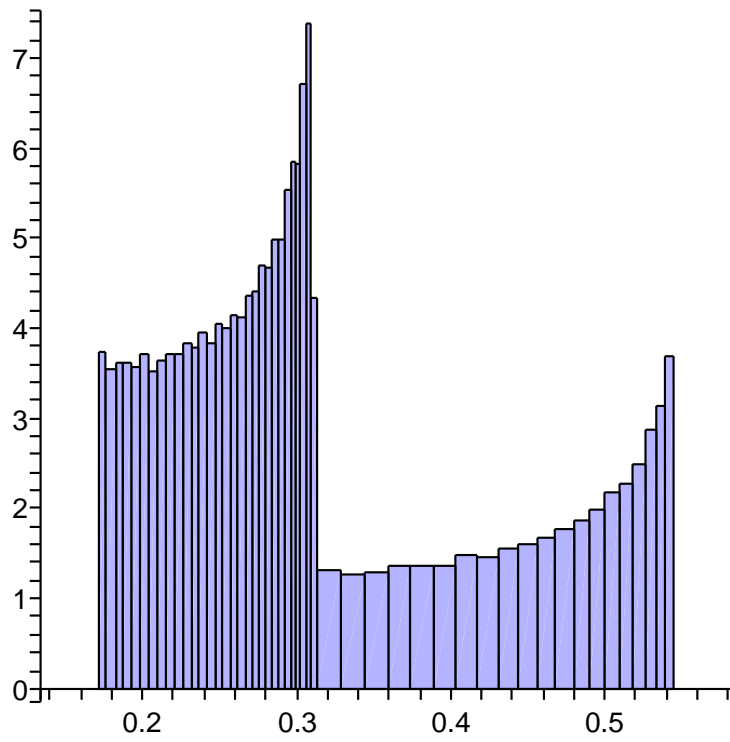


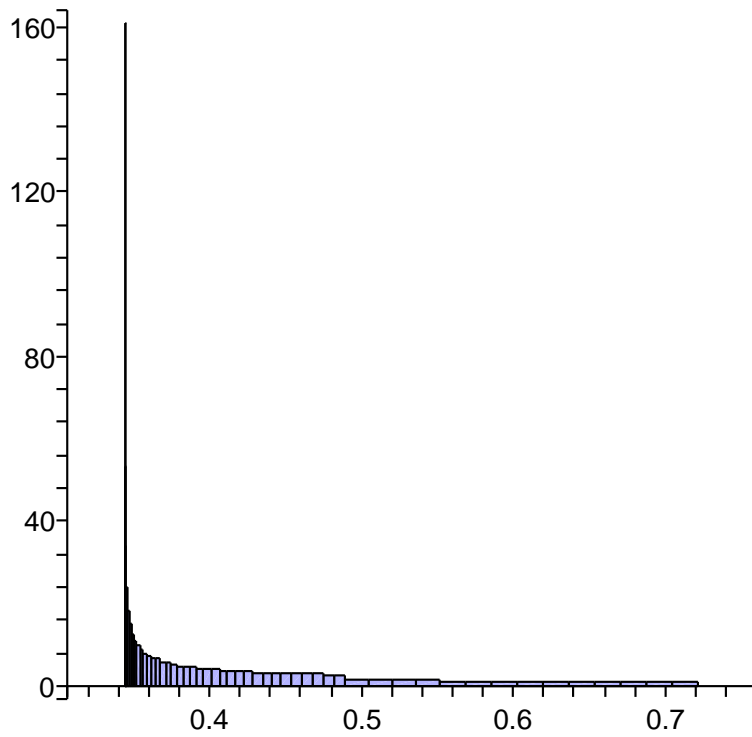
Number: $\xi = 0.7548\dots$ Equation: $x^3 + x^2 - 1 = 0$. "All" optimal polynomials.

1	$x^2 - x$	[0, -1, 1, 1]	$-x^2 - x + 1$	0	0.1850373752	0.3700747505
2	$x^2 - 2x + 1$	[1, -2, 1, 1]	$-x^2 - x + 1$	-1	0.2403398340	0.3605097510
3	$3x^2 - x - 1$	[1, 3, -1, 1]	$-x$	-1	0.4082111393	0.4989247258
4	$4x^2 - 3x$	[0, 1, 1, 1]	$-x^2 - x + 1$	0	0.2356506440	0.3682041313
5	$4x^2 - 7x + 3$	[1, 3, 0, 1]	$-x^2 - x + 1$	1	0.2343424870	0.3539049804
6	$11x^2 - 3x - 4$	[1, 3, -1, 1]	$-x$	1	0.4368344709	0.5270895268
7	$x^2 - 14x + 10$	[1, 2, -1, 1]	$-x^2 + 1$	1	0.3043808547	0.4612301727
8	$15x^2 - 10x - 1$	[1, 1, 0, 1]	$-x$	1	0.2637669366	0.3821689837
9	$16x^2 - 24x + 9$	[0, 1, 1, 1]	$-x^2 - x + 1$	0	0.2192636438	0.3475481020
10	$40x^2 - 9x - 16$	[1, -1, 2, 1]	$-x$	-1	0.4597700770	0.5566091494
11	$7x^2 - 49x + 33$	[1, 2, -1, 1]	$-x^2 + 1$	-1	0.2967854529	0.4374526105
12	$56x^2 - 33x - 7$	[1, 1, 0, 1]	$-x$	-1	0.2926193764	0.3988058720
13	$63x^2 - 82x + 26$	[0, 1, 1, 1]	$-x^2 - x + 1$	0	0.2037328392	0.3444733266
14	$145x^2 - 26x - 63$	[1, -1, 2, 1]	$-x$	1	0.4808901855	0.5871320363
15	$37x^2 - 171x + 108$	[1, 2, -1, 1]	$-x^2 + 1$	1	0.2876946989	0.4159230431
16	$208x^2 - 108x - 37$	[1, 1, 0, 1]	$-x$	1	0.3213237934	0.4181205065
17	$245x^2 - 279x + 71$	[0, 1, 1, 1]	$-x^2 - x + 1$	0	0.1877288104	0.3446482074
18	$524x^2 - 71x - 245$	[1, -1, 2, 1]	$-x$	-1	0.4998752936	0.6183302417
19	$174x^2 - 595x + 350$	[1, 2, -1, 1]	$-x^2 + 1$	-1	0.2772443851	0.3968864674
20	$769x^2 - 350x - 174$	[1, 1, 0, 1]	$-x$	-1	0.3495892618	0.4399043976
21	$943x^2 - 945x + 176$	[0, 1, 1, 1]	$-x^2 - x + 1$	0	0.1714254617	0.3480722470
22	$1888x^2 - 176x - 943$	[1, -1, 2, 1]	$-x$	1	0.5165260951	0.6498728082
23	$767x^2 - 2064x + 1121$	[1, 2, -1, 1]	$-x^2 + 1$	1	0.2655445564	0.3805445747
24	$2831x^2 - 1121x - 767$	[1, 1, 0, 1]	$-x$	1	0.3771154560	0.4639264015
25	$3598x^2 - 3185x + 354$	[0, 1, 1, 1]	$-x^2 - x + 1$	0	0.1977986020	0.3547090754
26	$6783x^2 - 354x - 3598$	[1, -1, 2, 1]	$-x$	-1	0.5306658134	0.6814249470
27	$3244x^2 - 7137x + 3539$	[1, 2, -1, 1]	$-x^2 + 1$	-1	0.2527194103	0.3670708206
28	$10381x^2 - 3539x - 3244$	[1, 1, 0, 1]	$-x$	-1	0.4036102292	0.4899315550
29	$13625x^2 - 10676x + 295$	[0, 1, 1, 1]	$-x^2 - x + 1$	0	0.2257683768	0.3644882522
30	$24301x^2 - 295x - 13625$	[1, -1, 2, 1]	$-x$	1	0.5421443750	0.7126517738
31	$13330x^2 - 24596x + 10971$	[1, 2, -1, 1]	$-x^2 + 1$	1	0.2389050685	0.3566082110
32	$37926x^2 - 10971x - 13330$	[1, 1, 0, 1]	$-x$	1	0.4287923740	0.5176438476
33	$-2359x^2 + 48897x - 35567$	[1, -2, 0, 1]	$x^2 - 1$	1	0.3065964558	0.4695273628
34	$51256x^2 - 35567x - 2359$	[1, 1, 0, 1]	x	1	0.2543130812	0.3773059841
35	$53615x^2 - 84464x + 33208$	[0, -1, 1, 1]	$-x^2 - x + 1$	0	0.2242481523	0.3492677929
36	$138079x^2 - 33208x - 53615$	[1, 1, 2, 1]	$-x$	1	0.4523946151	0.5467691496
37	$20407x^2 - 171287x + 117672$	[1, 2, -1, 1]	$-x^2 + 1$	1	0.2994612935	0.4450431304
38	$191694x^2 - 117672x - 20407$	[1, 1, 0, 1]	$-x$	1	0.2831297505	0.3930262277
39	$212101x^2 - 288959x + 97265$	[0, 1, 1, 1]	$-x^2 - x + 1$	0	0.2089042254	0.3451274751
40	$501060x^2 - 97265x - 212101$	[1, -1, 2, 1]	$-x$	-1	0.4741664454	0.5769983342

41	$114836x^2 - 598325x + 386224$	$[1, 2, -1, 1]$	$-x^2 + 1$	-1	0.2908408319	0.4227424687
42	$713161x^2 - 386224x - 114836$	$[1, 1, 0, 1]$	$-x$	-1	0.3119125336	0.4114821333
43	$827997x^2 - 984549x + 271388$	$[0, 1, 1, 1]$	$-x^2 - x + 1$	0	0.1930361436	0.3442312017
44	$1812546x^2 - 271388x - 827997$	$[1, -1, 2, 1]$	$-x$	1	0.4938767857	0.6080105583
45	$556609x^2 - 2083934x + 1255937$	$[1, 2, -1, 1]$	$-x^2 + 1$	1	0.2808265658	0.4028620701
46	$2640543x^2 - 1255937x - 556609$	$[1, 1, 0, 1]$	$-x$	1	0.3403559390	0.4324778157
47	$3197152x^2 - 3339871x + 699328$	$[0, 1, 1, 1]$	$-x^2 - x + 1$	0	0.1768123257	0.3465884854
48	$6537023x^2 - 699328x - 3197152$	$[1, -1, 2, 1]$	$-x$	-1	0.5113164366	0.6394766678
49	$2497824x^2 - 7236351x + 4039199$	$[1, 2, -1, 1]$	$-x^2 + 1$	-1	0.2695247834	0.3856129389
50	$9734175x^2 - 4039199x - 2497824$	$[1, 1, 0, 1]$	$-x$	-1	0.3681580773	0.4557904332
51	$12231999x^2 - 11275550x + 1541375$	$[0, 1, 1, 1]$	$-x^2 - x + 1$	0	0.1887718421	0.3521743068
52	$23507549x^2 - 1541375x - 12231999$	$[1, -1, 2, 1]$	$-x$	1	0.5263002990	0.6710626912
53	$10690624x^2 - 25048924x + 12816925$	$[1, 2, -1, 1]$	$-x^2 + 1$	1	0.2570554384	0.3711781520
54	$35739548x^2 - 12816925x - 10690624$	$[1, 1, 0, 1]$	$-x$	1	0.3950238652	0.4811725529
55	$46430172x^2 - 37865849x + 2126301$	$[0, 1, 1, 1]$	$-x^2 - x + 1$	0	0.2164871455	0.3609293797
56	$84296021x^2 - 2126301x - 46430172$	$[1, -1, 2, 1]$	$-x$	-1	0.5386693388	0.7024333843
57	$44303871x^2 - 86422322x + 39992150$	$[1, 2, -1, 1]$	$-x^2 + 1$	-1	0.2435508765	0.3597109157
58	$130726193x^2 - 39992150x - 44303871$	$[1, 1, 0, 1]$	$-x$	-1	0.4206681578	0.5083547771
59	$-4311721x^2 + 170718343x - 126414472$	$[1, -2, 0, 1]$	$x^2 - 1$	-1	0.3086061064	0.4780175220
60	$175030064x^2 - 126414472x - 4311721$	$[1, 1, 0, 1]$	x	-1	0.2448758865	0.3727607806
61	$179341785x^2 - 297132815x + 122102751$	$[0, -1, 1, 1]$	$-x^2 - x + 1$	0	0.2291544309	0.3513329398
62	$476474600x^2 - 122102751x - 179341785$	$[1, 1, 2, 1]$	$-x$	-1	0.4448187744	0.5370486020
63	$57239034x^2 - 598577351x + 419235566$	$[1, 2, -1, 1]$	$-x^2 + 1$	-1	0.3019770168	0.4528705771
64	$655816385x^2 - 419235566x - 57239034$	$[1, 1, 0, 1]$	$-x$	-1	0.2736367559	0.3875429345
65	$713055419x^2 - 1017812917x + 361996532$	$[0, 1, 1, 1]$	$-x^2 - x + 1$	0	0.2140189011	0.3461331453
66	$1730868336x^2 - 361996532x - 713055419$	$[1, -1, 2, 1]$	$-x$	1	0.4672193880	0.5669494804
67	$351058887x^2 - 2092864868x + 1379809449$	$[1, 2, -1, 1]$	$-x^2 + 1$	1	0.2938359268	0.4298241249
68	$2443923755x^2 - 1379809449x - 351058887$	$[1, 1, 0, 1]$	$-x$	1	0.3024644948	0.4051189484
69	$2794982642x^2 - 3472674317x + 1028750562$	$[0, 1, 1, 1]$	$-x^2 - x + 1$	0	0.1983049307	0.3441667214
70	$6267656959x^2 - 1028750562x - 2794982642$	$[1, -1, 2, 1]$	$-x$	-1	0.4876322454	0.5977400536
71	$1766232080x^2 - 7296407521x + 4501424879$	$[1, 2, -1, 1]$	$-x^2 + 1$	-1	0.2842692432	0.4091227732
72	$9062639601x^2 - 4501424879x - 1766232080$	$[1, 1, 0, 1]$	$-x$	-1	0.3310531345	0.4253022758
73	$10828871681x^2 - 11797832400x + 2735192799$	$[0, 1, 1, 1]$	$-x^2 - x + 1$	0	0.1821793029	0.3454545390
74	$22626704081x^2 - 2735192799x - 10828871681$	$[1, -1, 2, 1]$	$-x$	1	0.5058406910	0.6290935202
75	$8093678882x^2 - 25361896880x + 14533025199$	$[1, 2, -1, 1]$	$-x^2 + 1$	1	0.2733785039	0.3909862399
76	$33455575762x^2 - 14533025199x - 8093678882$	$[1, 1, 0, 1]$	$-x$	1	0.3590992441	0.4478786974
77	$41549254644x^2 - 39894922079x + 6439346317$	$[0, 1, 1, 1]$	$-x^2 - x + 1$	0	0.1798499225	0.3499829296
78	$81444176723x^2 - 6439346317x - 41549254644$	$[1, -1, 2, 1]$	$-x$	-1	0.5216514660	0.6606771041
79	$35109908327x^2 - 87883523040x + 46334268396$	$[1, 2, -1, 1]$	$-x^2 + 1$	-1	0.2612792998	0.3756070203
80	$122993431367x^2 - 46334268396x - 35109908327$	$[1, 1, 0, 1]$	$-x$	-1	0.3863051511	0.4726085939



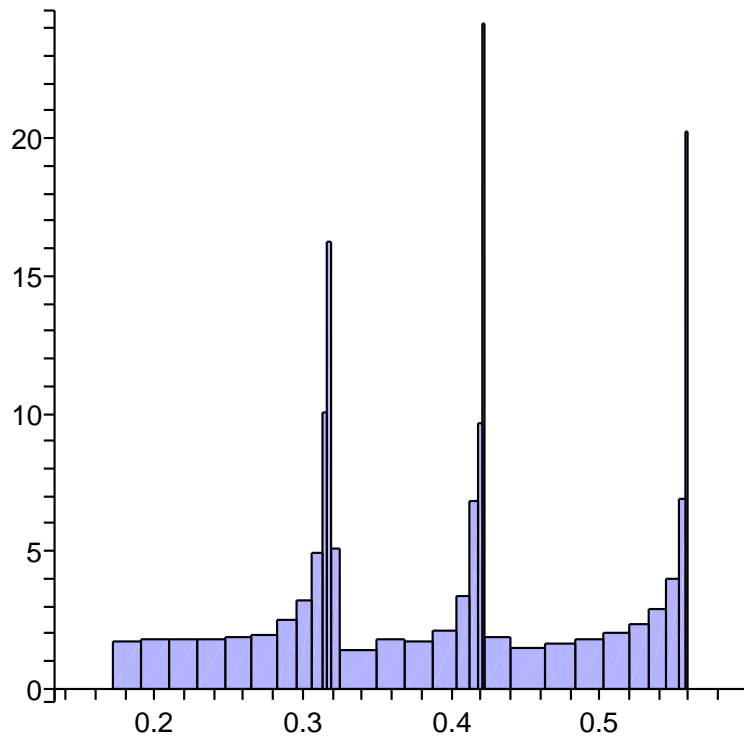
“All” polynomials, norm L_∞



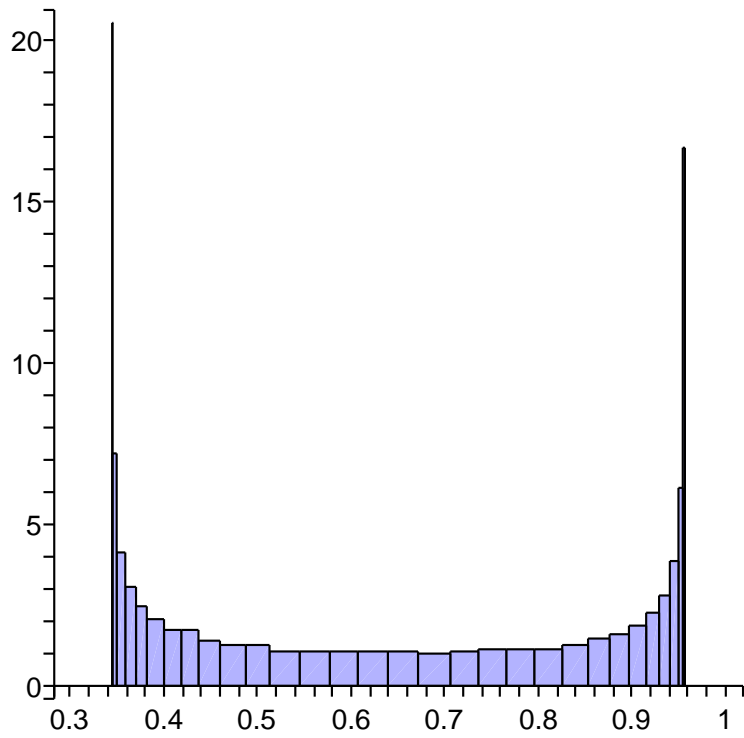
“All” polynomials, norm L_2

Number: $\xi = 0.7548\dots$ Equation: $x^3+x^2-1 = 0$. Period $[1, 1, 0, 1]$, $[0, 1, 1, 1]$, $[1, -1, 2, 1]$, $[1, 2, -1, 1]$ with initial polynomials $-x, x^2, 1-x$. Period $-x, -x^2+1, -x, -x^2-x+1$ with initial polynomial $-x$.

1	$x^2 - x$	$[1, 1, 0, 1]$	$-x$	0.1850373752	0.3700747505
2	$x^2 - 2x + 1$	$[0, 1, 1, 1]$	$-x^2 - x + 1$	0.2403398340	0.3605097510
3	$3x^2 - x - 1$	$[1, -1, 2, 1]$	$-x$	0.4082111393	0.4989247258
4	$-4x + 3$	$[1, 2, -1, 1]$	$-x^2 + 1$	0.3121706398	0.4877666247
5	$4x^2 - 3x$	$[1, 1, 0, 1]$	$-x$	0.2356506440	0.3682041313
6	$4x^2 - 7x + 3$	$[0, 1, 1, 1]$	$-x^2 - x + 1$	0.2343424870	0.3539049804
7	$11x^2 - 3x - 4$	$[1, -1, 2, 1]$	$-x$	0.4368344709	0.5270895268
8	$x^2 - 14x + 10$	$[1, 2, -1, 1]$	$-x^2 + 1$	0.3043808547	0.4612301727
9	$15x^2 - 10x - 1$	$[1, 1, 0, 1]$	$-x$	0.2637669366	0.3821689837
10	$16x^2 - 24x + 9$	$[0, 1, 1, 1]$	$-x^2 - x + 1$	0.2192636438	0.3475481020
11	$40x^2 - 9x - 16$	$[1, -1, 2, 1]$	$-x$	0.4597700770	0.5566091494
12	$7x^2 - 49x + 33$	$[1, 2, -1, 1]$	$-x^2 + 1$	0.2967854529	0.4374526105
13	$56x^2 - 33x - 7$	$[1, 1, 0, 1]$	$-x$	0.2926193764	0.3988058720
14	$63x^2 - 82x + 26$	$[0, 1, 1, 1]$	$-x^2 - x + 1$	0.2037328392	0.3444733266
15	$145x^2 - 26x - 63$	$[1, -1, 2, 1]$	$-x$	0.4808901855	0.5871320363
16	$37x^2 - 171x + 108$	$[1, 2, -1, 1]$	$-x^2 + 1$	0.2876946989	0.4159230431
17	$208x^2 - 108x - 37$	$[1, 1, 0, 1]$	$-x$	0.3213237934	0.4181205065
18	$245x^2 - 279x + 71$	$[0, 1, 1, 1]$	$-x^2 - x + 1$	0.1877288104	0.3446482074
19	$524x^2 - 71x - 245$	$[1, -1, 2, 1]$	$-x$	0.4998752936	0.6183302417
20	$174x^2 - 595x + 350$	$[1, 2, -1, 1]$	$-x^2 + 1$	0.2772443851	0.3968864674
21	$769x^2 - 350x - 174$	$[1, 1, 0, 1]$	$-x$	0.3495892618	0.4399043976
22	$943x^2 - 945x + 176$	$[0, 1, 1, 1]$	$-x^2 - x + 1$	0.1714254617	0.3480722470
23	$1888x^2 - 176x - 943$	$[1, -1, 2, 1]$	$-x$	0.5165260951	0.6498728082
24	$767x^2 - 2064x + 1121$	$[1, 2, -1, 1]$	$-x^2 + 1$	0.2655445564	0.3805445747
25	$2831x^2 - 1121x - 767$	$[1, 1, 0, 1]$	$-x$	0.3771154560	0.4639264015
26	$3598x^2 - 3185x + 354$	$[0, 1, 1, 1]$	$-x^2 - x + 1$	0.1977986020	0.3547090754
27	$6783x^2 - 354x - 3598$	$[1, -1, 2, 1]$	$-x$	0.5306658134	0.6814249470
28	$3244x^2 - 7137x + 3539$	$[1, 2, -1, 1]$	$-x^2 + 1$	0.2527194103	0.3670708206
29	$10381x^2 - 3539x - 3244$	$[1, 1, 0, 1]$	$-x$	0.4036102292	0.4899315550
30	$13625x^2 - 10676x + 295$	$[0, 1, 1, 1]$	$-x^2 - x + 1$	0.2257683768	0.3644882522
31	$24301x^2 - 295x - 13625$	$[1, -1, 2, 1]$	$-x$	0.5421443750	0.7126517738
32	$13330x^2 - 24596x + 10971$	$[1, 2, -1, 1]$	$-x^2 + 1$	0.2389050685	0.3566082110
33	$37926x^2 - 10971x - 13330$	$[1, 1, 0, 1]$	$-x$	0.4287923740	0.5176438476
34	$51256x^2 - 35567x - 2359$	$[0, 1, 1, 1]$	$-x^2 - x + 1$	0.2543130812	0.3773059841
35	$86823x^2 + 2359x - 51256$	$[1, -1, 2, 1]$	$-x$	0.5508399501	0.7432218568
36	$53615x^2 - 84464x + 33208$	$[1, 2, -1, 1]$	$-x^2 + 1$	0.2242481523	0.3492677929
37	$138079x^2 - 33208x - 53615$	$[1, 1, 0, 1]$	$-x$	0.4523946151	0.5467691496
38	$191694x^2 - 117672x - 20407$	$[0, 1, 1, 1]$	$-x^2 - x + 1$	0.2831297505	0.3930262277
39	$309366x^2 + 20407x - 191694$	$[1, -1, 2, 1]$	$-x$	0.5566602464	0.7728107347
40	$212101x^2 - 288959x + 97265$	$[1, 2, -1, 1]$	$-x^2 + 1$	0.2089042254	0.3451274751



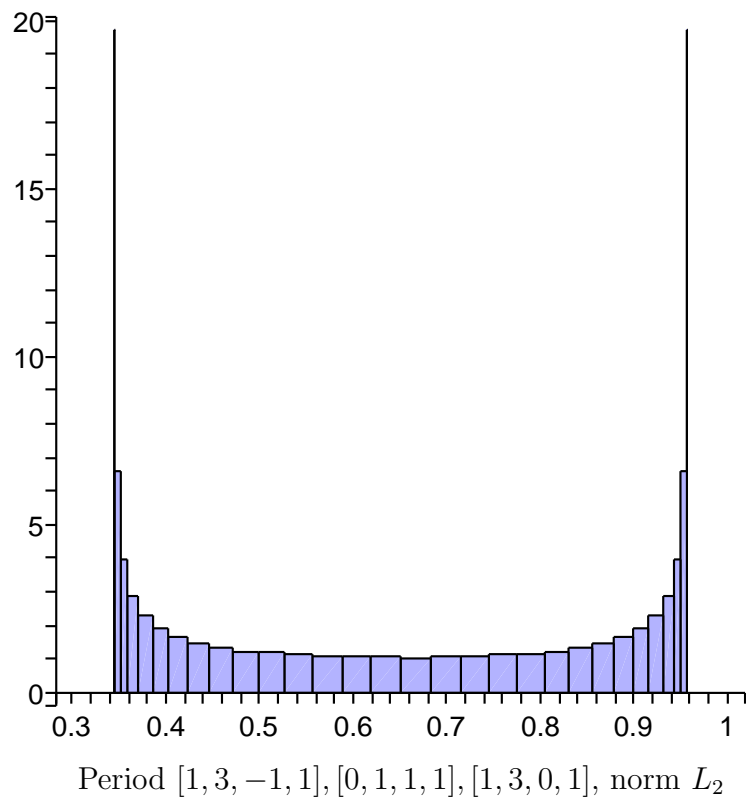
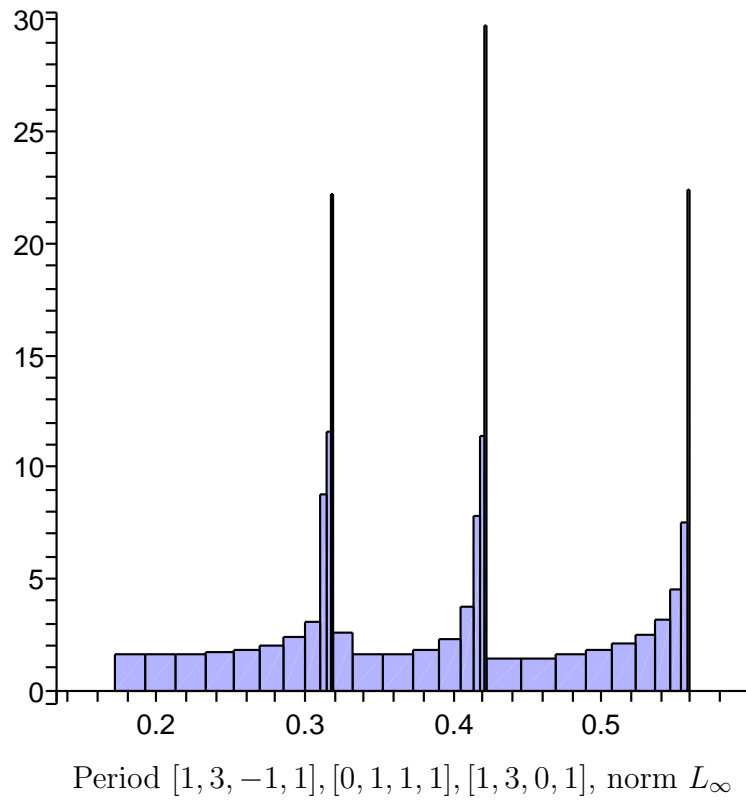
Period $[1, 1, 0, 1], [0, 1, 1, 1], [1, -1, 2, 1], [1, 2, -1, 1]$, norm L_∞



Period $[1, 1, 0, 1], [0, 1, 1, 1], [1, -1, 2, 1], [1, 2, -1, 1]$, norm L_2

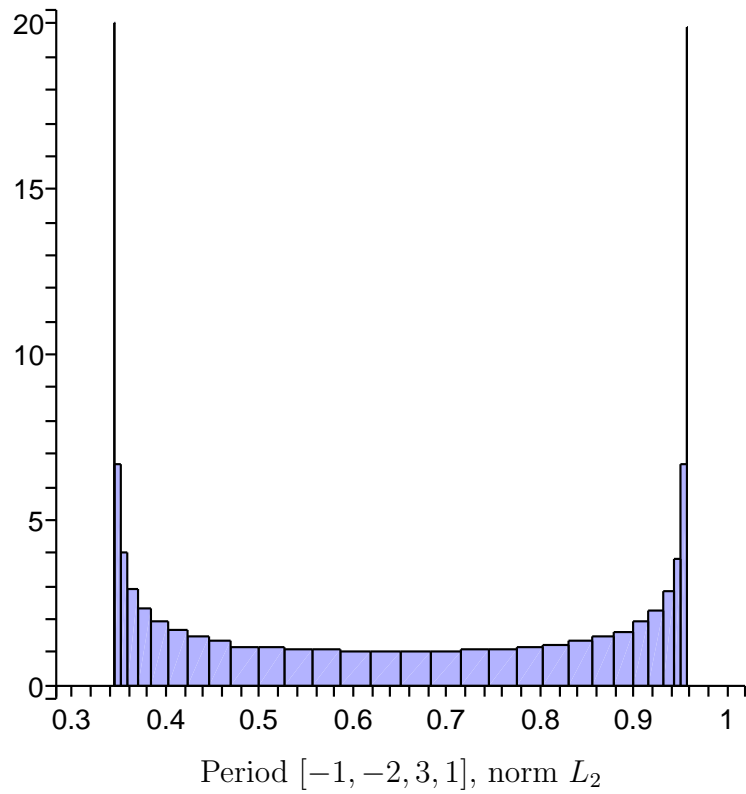
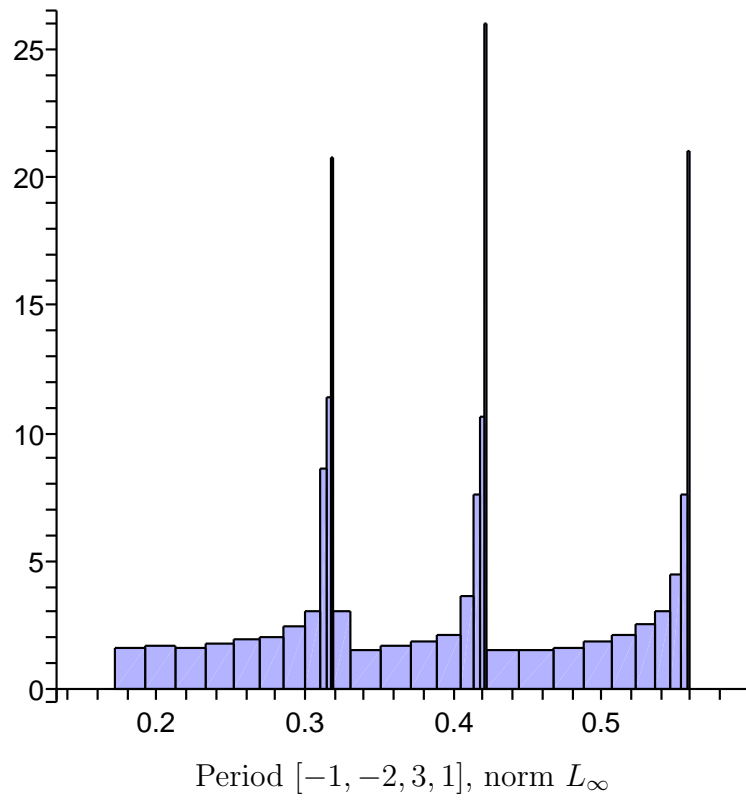
Number: $\xi = 0.7548\dots$ Equation: $x^3 + x^2 - 1 = 0$. Period $[1, 3, -1, 1]$, $[0, 1, 1, 1]$, $[1, 3, 0, 1]$ with initial polynomials $x^2, x^2 - x, (x - 1)^2$. Period $-x^2 - x + 1, -x^2 - x + 1, -x$ with initial polynomial x^2 .

1	$3x^2 - x - 1$	$[1, 3, -1, 1]$	$-x$	0.4082111393	0.4989247258
2	$4x^2 - 3x$	$[0, 1, 1, 1]$	$-x^2 - x + 1$	0.2356506440	0.3682041313
3	$4x^2 - 7x + 3$	$[1, 3, 0, 1]$	$-x^2 - x + 1$	0.2343424870	0.3539049804
4	$11x^2 - 3x - 4$	$[1, 3, -1, 1]$	$-x$	0.4368344709	0.5270895268
5	$15x^2 - 10x - 1$	$[0, 1, 1, 1]$	$-x^2 - x + 1$	0.2637669366	0.3821689837
6	$16x^2 - 24x + 9$	$[1, 3, 0, 1]$	$-x^2 - x + 1$	0.2192636438	0.3475481020
7	$40x^2 - 9x - 16$	$[1, 3, -1, 1]$	$-x$	0.4597700770	0.5566091494
8	$56x^2 - 33x - 7$	$[0, 1, 1, 1]$	$-x^2 - x + 1$	0.2926193764	0.3988058720
9	$63x^2 - 82x + 26$	$[1, 3, 0, 1]$	$-x^2 - x + 1$	0.2037328392	0.3444733266
10	$145x^2 - 26x - 63$	$[1, 3, -1, 1]$	$-x$	0.4808901855	0.5871320363
11	$208x^2 - 108x - 37$	$[0, 1, 1, 1]$	$-x^2 - x + 1$	0.3213237934	0.4181205065
12	$245x^2 - 279x + 71$	$[1, 3, 0, 1]$	$-x^2 - x + 1$	0.1877288104	0.3446482074
13	$524x^2 - 71x - 245$	$[1, 3, -1, 1]$	$-x$	0.4998752936	0.6183302417
14	$769x^2 - 350x - 174$	$[0, 1, 1, 1]$	$-x^2 - x + 1$	0.3495892618	0.4399043976
15	$943x^2 - 945x + 176$	$[1, 3, 0, 1]$	$-x^2 - x + 1$	0.1714254617	0.3480722470
16	$1888x^2 - 176x - 943$	$[1, 3, -1, 1]$	$-x$	0.5165260951	0.6498728082
17	$2831x^2 - 1121x - 767$	$[0, 1, 1, 1]$	$-x^2 - x + 1$	0.3771154560	0.4639264015
18	$3598x^2 - 3185x + 354$	$[1, 3, 0, 1]$	$-x^2 - x + 1$	0.1977986020	0.3547090754
19	$6783x^2 - 354x - 3598$	$[1, 3, -1, 1]$	$-x$	0.5306658134	0.6814249470
20	$10381x^2 - 3539x - 3244$	$[0, 1, 1, 1]$	$-x^2 - x + 1$	0.4036102292	0.4899315550
21	$13625x^2 - 10676x + 295$	$[1, 3, 0, 1]$	$-x^2 - x + 1$	0.2257683768	0.3644882522
22	$24301x^2 - 295x - 13625$	$[1, 3, -1, 1]$	$-x$	0.5421443750	0.7126517738
23	$37926x^2 - 10971x - 13330$	$[0, 1, 1, 1]$	$-x^2 - x + 1$	0.4287923740	0.5176438476
24	$51256x^2 - 35567x - 2359$	$[1, 3, 0, 1]$	$-x^2 - x + 1$	0.2543130812	0.3773059841
25	$86823x^2 + 2359x - 51256$	$[1, 3, -1, 1]$	$-x$	0.5508399501	0.7432218568
26	$138079x^2 - 33208x - 53615$	$[0, 1, 1, 1]$	$-x^2 - x + 1$	0.4523946151	0.5467691496
27	$191694x^2 - 117672x - 20407$	$[1, 3, 0, 1]$	$-x^2 - x + 1$	0.2831297505	0.3930262277
28	$309366x^2 + 20407x - 191694$	$[1, 3, -1, 1]$	$-x$	0.5566602464	0.7728107347
29	$501060x^2 - 97265x - 212101$	$[0, 1, 1, 1]$	$-x^2 - x + 1$	0.4741664454	0.5769983342
30	$713161x^2 - 386224x - 114836$	$[1, 3, 0, 1]$	$-x^2 - x + 1$	0.3119125336	0.4114821333
31	$1099385x^2 + 114836x - 713161$	$[1, 3, -1, 1]$	$-x$	0.5595434892	0.8011043603
32	$1812546x^2 - 271388x - 827997$	$[0, 1, 1, 1]$	$-x^2 - x + 1$	0.4938767857	0.6080105583
33	$2640543x^2 - 1255937x - 556609$	$[1, 3, 0, 1]$	$-x^2 - x + 1$	0.3403559390	0.4324778157
34	$3896480x^2 + 556609x - 2640543$	$[1, 3, -1, 1]$	$-x$	0.5594590766	0.8278024340
35	$6537023x^2 - 699328x - 3197152$	$[0, 1, 1, 1]$	$-x^2 - x + 1$	0.5113164366	0.6394766678
36	$9734175x^2 - 4039199x - 2497824$	$[1, 3, 0, 1]$	$-x^2 - x + 1$	0.3681580773	0.4557904332
37	$13773374x^2 + 2497824x - 9734175$	$[1, 3, -1, 1]$	$-x$	0.5564079047	0.8526215908
38	$23507549x^2 - 1541375x - 12231999$	$[0, 1, 1, 1]$	$-x^2 - x + 1$	0.5263002990	0.6710626912
39	$35739548x^2 - 12816925x - 10690624$	$[1, 3, 0, 1]$	$-x^2 - x + 1$	0.3950238652	0.4811725529
40	$48556473x^2 + 10690624x - 35739548$	$[1, 3, -1, 1]$	$-x$	0.5504223575	0.8752984077



Number: $\xi = 0.7548\dots$ Equation: $x^3 + x^2 - 1 = 0$. Period $[-1, -2, 3, 1]$ with initial polynomials $x^2, x^2 - x, (x - 1)^2$. Period $-x^2 - x + 1$ with initial polynomial x^2 .

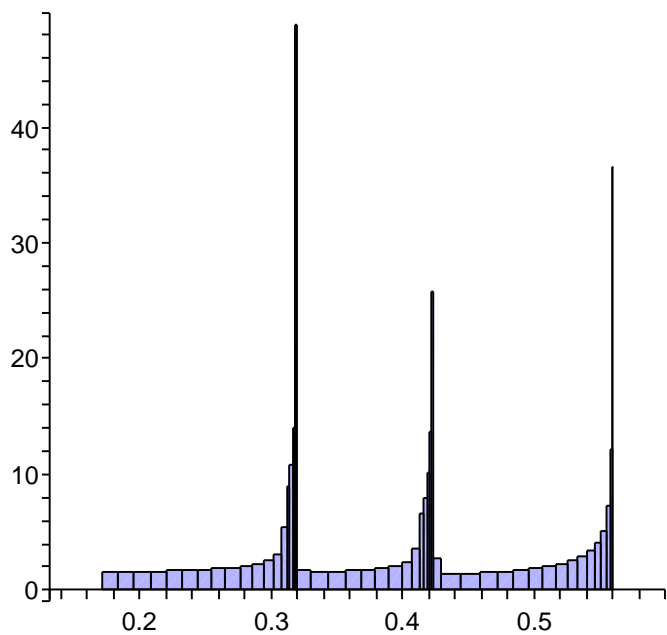
1	$-4x + 3$	$[-1, -2, 3, 1]$	$-x^2 - x + 1$	0.3121706398	0.4877666247
2	$-3x^2 - 7x + 7$	$[-1, -2, 3, 1]$	$-x^2 - x + 1$	0.3104377007	0.6778945709
3	$-10x^2 - 11x + 14$	$[-1, -2, 3, 1]$	$-x^2 - x + 1$	0.4032187841	0.8578685355
4	$-15x + 25 - 24x^2$	$[-1, -2, 3, 1]$	$-x^2 - x + 1$	0.4175139665	0.9525998659
5	$-49x^2 - 16x + 40$	$[-1, -2, 3, 1]$	$-x^2 - x + 1$	0.5208221629	0.9234235517
6	$-89x^2 - 7x + 56$	$[-1, -2, 3, 1]$	$-x^2 - x + 1$	0.5579350130	0.7822782798
7	$26x + 63 - 145x^2$	$[-1, -2, 3, 1]$	$-x^2 - x + 1$	0.4808901855	0.5871320363
8	$-208x^2 + 108x + 37$	$[-1, -2, 3, 1]$	$-x^2 - x + 1$	0.3213237934	0.4181205065
9	$-245x^2 + 279x - 71$	$[-1, -2, 3, 1]$	$-x^2 - x + 1$	0.1877288104	0.3446482074
10	$-174x^2 + 595x - 350$	$[-1, -2, 3, 1]$	$-x^2 - x + 1$	0.2772443851	0.3968864674
11	$176x^2 + 1119x - 945$	$[-1, -2, 3, 1]$	$-x^2 - x + 1$	0.3184163115	0.5533836920
12	$1121x^2 + 1888x - 2064$	$[-1, -2, 3, 1]$	$-x^2 - x + 1$	0.3517716422	0.7498744467
13	$3185x^2 + 2831x - 3952$	$[-1, -2, 3, 1]$	$-x^2 - x + 1$	0.4187758400	0.9056699906
14	$7137x^2 + 3598x - 6783$	$[-1, -2, 3, 1]$	$-x^2 - x + 1$	0.4434916489	0.9567930326
15	$13920x^2 + 3244x - 10381$	$[-1, -2, 3, 1]$	$-x^2 - x + 1$	0.5478211933	0.8822499444
16	$24301x^2 - 295x - 13625$	$[-1, -2, 3, 1]$	$-x^2 - x + 1$	0.5421443750	0.7126517738
17	$37926x^2 - 10971x - 13330$	$[-1, -2, 3, 1]$	$-x^2 - x + 1$	0.4287923740	0.5176438476
18	$51256x^2 - 35567x - 2359$	$[-1, -2, 3, 1]$	$-x^2 - x + 1$	0.2543130812	0.3773059841
19	$53615x^2 - 84464x + 33208$	$[-1, -2, 3, 1]$	$-x^2 - x + 1$	0.2242481523	0.3492677929
20	$20407x^2 - 171287x + 117672$	$[-1, -2, 3, 1]$	$-x^2 - x + 1$	0.2994612935	0.4450431304
21	$-97265x^2 - 309366x + 288959$	$[-1, -2, 3, 1]$	$-x^2 - x + 1$	0.3172074368	0.6253019457
22	$-386224x^2 - 501060x + 598325$	$[-1, -2, 3, 1]$	$-x^2 - x + 1$	0.3852820727	0.8160211288
23	$-984549x^2 - 713161x + 1099385$	$[-1, -2, 3, 1]$	$-x^2 - x + 1$	0.4223868833	0.9388820294
24	$-2083934x^2 - 827997x + 1812546$	$[-1, -2, 3, 1]$	$-x^2 - x + 1$	0.4928162683	0.9434319361
25	$-3896480x^2 - 556609x + 2640543$	$[-1, -2, 3, 1]$	$-x^2 - x + 1$	0.5594590766	0.8278024340
26	$-6537023x^2 + 699328x + 3197152$	$[-1, -2, 3, 1]$	$-x^2 - x + 1$	0.5113164366	0.6394766678
27	$-9734175x^2 + 4039199x + 2497824$	$[-1, -2, 3, 1]$	$-x^2 - x + 1$	0.3681580773	0.4557904332
28	$-12231999x^2 + 11275550x - 1541375$	$[-1, -2, 3, 1]$	$-x^2 - x + 1$	0.1887718421	0.3521743068
29	$-10690624x^2 + 25048924x - 12816925$	$[-1, -2, 3, 1]$	$-x^2 - x + 1$	0.2570554384	0.3711781520
30	$2126301x^2 + 48556473x - 37865849$	$[-1, -2, 3, 1]$	$-x^2 - x + 1$	0.3136528364	0.5049980578
31	$39992150x^2 + 84296021x - 86422322$	$[-1, -2, 3, 1]$	$-x^2 - x + 1$	0.3226362196	0.6986810079
32	$126414472x^2 + 130726193x - 170718343$	$[-1, -2, 3, 1]$	$-x^2 - x + 1$	0.4088160509	0.8726912840
33	$297132815x^2 + 175030064x - 301444536$	$[-1, -2, 3, 1]$	$-x^2 - x + 1$	0.4138935930	0.9555717325
34	$598577351x^2 + 179341785x - 476474600$	$[-1, -2, 3, 1]$	$-x^2 - x + 1$	0.5299327226	0.9132875765
35	$1075051951x^2 + 57239034x - 655816385$	$[-1, -2, 3, 1]$	$-x^2 - x + 1$	0.5550669729	0.7632027642
36	$1730868336x^2 - 361996532x - 713055419$	$[-1, -2, 3, 1]$	$-x^2 - x + 1$	0.4672193880	0.5669494804
37	$2443923755x^2 - 1379809449x - 351058887$	$[-1, -2, 3, 1]$	$-x^2 - x + 1$	0.3024644948	0.4051189484
38	$2794982642x^2 - 3472674317x + 1028750562$	$[-1, -2, 3, 1]$	$-x^2 - x + 1$	0.1983049307	0.3441667214
39	$1766232080x^2 - 7296407521x + 4501424879$	$[-1, -2, 3, 1]$	$-x^2 - x + 1$	0.2842692432	0.4091227732
40	$-2735192799x^2 - 13564064480x + 11797832400$	$[-1, -2, 3, 1]$	$-x^2 - x + 1$	0.3190051587	0.5733129633



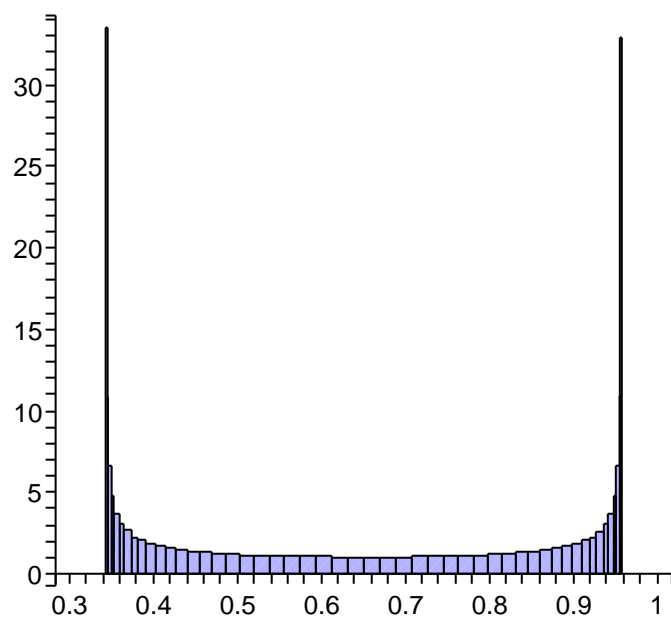
Number: $\xi = 0.7548\dots$ Equation: $x^3 + x^2 - 1 = 0$. Period $[1, 0, -1, 1]$ with initial polynomials $1, x, x^2$. Period x with initial polynomial 1.

1	$-x^2 + 1$	$[1, 0, -1, 1]$	x	0.4301597090	0.8603194180
2	$x^2 + x - 1$	$[1, 0, -1, 1]$	x	0.3247179572	0.9741538717
3	$-x + 1$	$[1, 0, -1, 1]$	x	0.2451223338	0.4902446675
4	$-x^2 + x$	$[1, 0, -1, 1]$	x	0.1850373752	0.3700747505
5	$2x^2 - 1$	$[1, 0, -1, 1]$	x	0.5587223280	0.6984029100
6	$-x + 2 - 2x^2$	$[1, 0, -1, 1]$	x	0.4217670070	0.9489757658
7	$x^2 + 2x - 2$	$[1, 0, -1, 1]$	x	0.3183824940	0.7163606114
8	$x^2 - 2x + 1$	$[1, 0, -1, 1]$	x	0.2403398340	0.3605097510
9	$x + 1 - 3x^2$	$[1, 0, -1, 1]$	x	0.4082111393	0.4989247258
10	$4x^2 + x - 3$	$[1, 0, -1, 1]$	x	0.5478212838	0.8902095862
11	$-3x^2 - 3x + 4$	$[1, 0, -1, 1]$	x	0.4135380523	0.8787683610
12	$4x - 3$	$[1, 0, -1, 1]$	x	0.3121706398	0.4877666247
13	$4x^2 - 3x$	$[1, 0, -1, 1]$	x	0.2356506440	0.3682041313
14	$-7x^2 + 4$	$[1, 0, -1, 1]$	x	0.5447801877	0.7226675959
15	$4x - 7 + 7x^2$	$[1, 0, -1, 1]$	x	0.4112423967	0.9567680249
16	$-3x^2 - 7x + 7$	$[1, 0, -1, 1]$	x	0.3104377007	0.6778945709
17	$-4x^2 - 3 + 7x$	$[1, 0, -1, 1]$	x	0.2343424870	0.3539049804
18	$11x^2 - 3x - 4$	$[1, 0, -1, 1]$	x	0.4368344709	0.5270895268
19	$-14x^2 - 4x + 11$	$[1, 0, -1, 1]$	x	0.5341511639	0.9075119265
20	$10x^2 - 14x + 11x$	$[1, 0, -1, 1]$	x	0.4032187841	0.8578685355
21	$x^2 - 14x + 10$	$[1, 0, -1, 1]$	x	0.3043808547	0.4612301727
22	$-15x^2 + 10x + 1$	$[1, 0, -1, 1]$	x	0.2637669366	0.3821689837
23	$25x^2 - 15 + x$	$[1, 0, -1, 1]$	x	0.5530882488	0.7530849595
24	$-15x + 25 - 24x^2$	$[1, 0, -1, 1]$	x	0.4175139665	0.9525998659
25	$9x^2 + 25x - 24$	$[1, 0, -1, 1]$	x	0.3151719686	0.6464807420
26	$16x^2 - 24x + 9$	$[1, 0, -1, 1]$	x	0.2192636438	0.3475481020
27	$9x + 16 - 40x^2$	$[1, 0, -1, 1]$	x	0.4597700770	0.5566091494
28	$49x^2 + 16x - 40$	$[1, 0, -1, 1]$	x	0.5208221629	0.9234235517
29	$-33x^2 - 40x + 49$	$[1, 0, -1, 1]$	x	0.3931570189	0.8334732303
30	$49x - 33 - 7x^2$	$[1, 0, -1, 1]$	x	0.2967854529	0.4374526105
31	$56x^2 - 33x - 7$	$[1, 0, -1, 1]$	x	0.2926193764	0.3988058720
32	$-89x^2 - 7x + 56$	$[1, 0, -1, 1]$	x	0.5579350130	0.7822782798
33	$56x - 89 + 82x^2$	$[1, 0, -1, 1]$	x	0.4211726805	0.9454452004
34	$-26x^2 - 89x + 82$	$[1, 0, -1, 1]$	x	0.3179338502	0.6149557529
35	$-63x^2 + 82x - 26$	$[1, 0, -1, 1]$	x	0.2037328392	0.3444733266
36	$145x^2 - 26x - 63$	$[1, 0, -1, 1]$	x	0.4808901855	0.5871320363
37	$-171x^2 - 63x + 145$	$[1, 0, -1, 1]$	x	0.5048690019	0.9364101883
38	$108x^2 + 145x - 171$	$[1, 0, -1, 1]$	x	0.3811143339	0.8071683834
39	$37x^2 - 171x + 108$	$[1, 0, -1, 1]$	x	0.2876946989	0.4159230431
40	$-208x^2 + 108x + 37$	$[1, 0, -1, 1]$	x	0.3213237934	0.4181205065

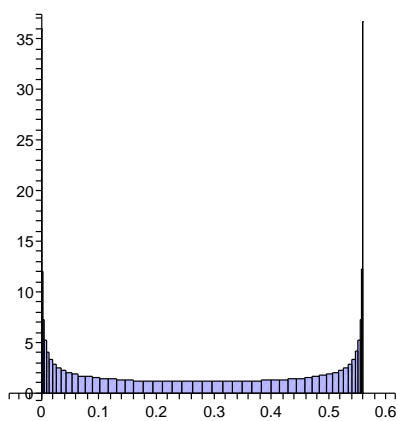
41	$316x^2 + 37x - 208$	$[1, 0, -1, 1]$	x	0.5598439086	0.8100793794
42	$-279x^2 - 208x + 316$	$[1, 0, -1, 1]$	x	0.4226136632	0.9351580039
43	$71x^2 + 316x - 279$	$[1, 0, -1, 1]$	x	0.3190216158	0.5838144130
44	$245x^2 - 279x + 71$	$[1, 0, -1, 1]$	x	0.1877288104	0.3446482074
45	$-524x^2 + 71x + 245$	$[1, 0, -1, 1]$	x	0.4998752936	0.6183302417
46	$595x^2 + 245x - 524$	$[1, 0, -1, 1]$	x	0.4865299795	0.9463659167
47	$-350x^2 - 524x + 595$	$[1, 0, -1, 1]$	x	0.3672706155	0.7792029562
48	$-174x^2 + 595x - 350$	$[1, 0, -1, 1]$	x	0.2772443851	0.3968864674
49	$769x^2 - 350x - 174$	$[1, 0, -1, 1]$	x	0.3495892618	0.4399043976
50	$-1119x^2 - 174x + 769$	$[1, 0, -1, 1]$	x	0.5587816736	0.8361895814
51	$945x^2 + 769x - 1119$	$[1, 0, -1, 1]$	x	0.4218118057	0.9218525664
52	$-176x^2 - 1119x + 945$	$[1, 0, -1, 1]$	x	0.3184163115	0.5533836920
53	$-943x^2 + 945x - 176$	$[1, 0, -1, 1]$	x	0.1714254617	0.3480722470
54	$1888x^2 - 176x - 943$	$[1, 0, -1, 1]$	x	0.5165260951	0.6498728082
55	$-2064x^2 - 943x + 1888$	$[1, 0, -1, 1]$	x	0.4659982113	0.9531843150
56	$1121x^2 + 1888x - 2064$	$[1, 0, -1, 1]$	x	0.3517716422	0.7498744467
57	$767x^2 - 2064x + 1121$	$[1, 0, -1, 1]$	x	0.2655445564	0.3805445747
58	$-2831x^2 + 1121x + 767$	$[1, 0, -1, 1]$	x	0.3771154560	0.4639264015
59	$3952x^2 + 767x - 2831$	$[1, 0, -1, 1]$	x	0.5547598753	0.8603318499
60	$-3185x^2 - 2831x + 3952$	$[1, 0, -1, 1]$	x	0.4187758400	0.9056699906
61	$354x^2 + 3952x - 3185$	$[1, 0, -1, 1]$	x	0.3161245288	0.5239866506
62	$3598x^2 - 3185x + 354$	$[1, 0, -1, 1]$	x	0.1977986020	0.3547090754
63	$-6783x^2 + 354x + 3598$	$[1, 0, -1, 1]$	x	0.5306658134	0.6814249470
64	$7137x^2 + 3598x - 6783$	$[1, 0, -1, 1]$	x	0.4434916489	0.9567930326
65	$-3539x^2 - 6783x + 7137$	$[1, 0, -1, 1]$	x	0.3347819409	0.7194941233
66	$-3244x^2 + 7137x - 3539$	$[1, 0, -1, 1]$	x	0.2527194103	0.3670708206
67	$10381x^2 - 3539x - 3244$	$[1, 0, -1, 1]$	x	0.4036102292	0.4899315550
68	$-13920x^2 - 3244x + 10381$	$[1, 0, -1, 1]$	x	0.5478211933	0.8822499444
69	$10676x^2 + 10381x - 13920$	$[1, 0, -1, 1]$	x	0.4135379839	0.8867820360
70	$-295x^2 - 13920x + 10676$	$[1, 0, -1, 1]$	x	0.3121705882	0.4959352981
71	$-13625x^2 + 10676x - 295$	$[1, 0, -1, 1]$	x	0.2257683768	0.3644882522
72	$24301x^2 - 295x - 13625$	$[1, 0, -1, 1]$	x	0.5421443750	0.7126517738
73	$-24596x^2 - 13625x + 24301$	$[1, 0, -1, 1]$	x	0.4192491691	0.9571537673
74	$10971x^2 + 24301x - 24596$	$[1, 0, -1, 1]$	x	0.3164818344	0.6883844335
75	$13330x^2 - 24596x + 10971$	$[1, 0, -1, 1]$	x	0.2389050685	0.3566082110
76	$-37926x^2 + 10971x + 13330$	$[1, 0, -1, 1]$	x	0.4287923740	0.5176438476
77	$48897x^2 + 13330x - 37926$	$[1, 0, -1, 1]$	x	0.5380392728	0.9017112330
78	$-35567x^2 - 37926x + 48897$	$[1, 0, -1, 1]$	x	0.4061538306	0.8653891733
79	$-2359x^2 + 48897x - 35567$	$[1, 0, -1, 1]$	x	0.3065964558	0.4695273628
80	$51256x^2 - 35567x - 2359$	$[1, 0, -1, 1]$	x	0.2543130812	0.3773059841



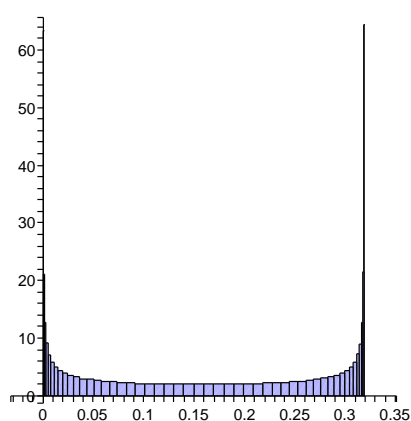
Period $[1, 0, -1, 1]$, norm L_∞



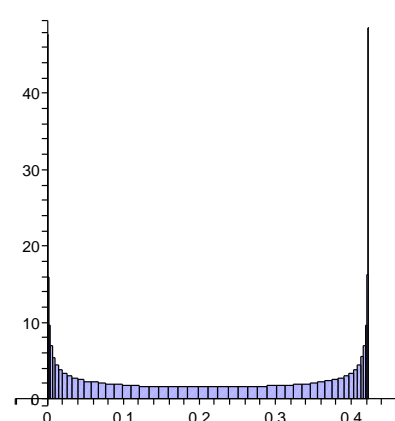
Period $[1, 0, -1, 1]$, norm L_2



Period $[1, 0, -1, 1]$, norm c_2



Period $[1, 0, -1, 1]$, norm c_1



Period $[1, 0, -1, 1]$, norm c_0

Number: $\xi = 0.7548\dots$ Equation: $x^3 + x^2 - 1 = 0$. Compare period $[1, 0, -1, 1]$ with “all”.

1	$-x^2 + 1$	<i>no</i>	<i>YES</i>	<i>WRONG HEIGHT</i>
2	$x^2 + x - 1$	<i>no</i>	<i>YES</i>	<i>WRONG HEIGHT</i>
3	$-x + 1$	<i>no</i>	<i>YES</i>	<i>WRONG HEIGHT</i>
4	$-x^2 + x$	<i>YES</i>	<i>YES</i>	
5	$2x^2 - 1$	<i>no</i>	<i>YES</i>	<i>WRONG HEIGHT</i>
6	$-2x^2 - x + 2$	<i>no</i>	<i>YES</i>	<i>WRONG HEIGHT</i>
7	$x^2 + 2x - 2$	<i>no</i>	<i>YES</i>	<i>WRONG HEIGHT</i>
8	$x^2 - 2x + 1$	<i>YES</i>	<i>YES</i>	
9	$-3x^2 + x + 1$	<i>YES</i>	<i>YES</i>	
10	$4x^2 + x - 3$	<i>no</i>	<i>YES</i>	<i>WRONG HEIGHT</i>
11	$-3x^2 - 3x + 4$	<i>no</i>	<i>YES</i>	<i>WRONG HEIGHT</i>
12	$4x - 3$	<i>no</i>	<i>YES</i>	<i>WRONG HEIGHT</i>
13	$4x^2 - 3x$	<i>YES</i>	<i>YES</i>	
14	$-7x^2 + 4$	<i>no</i>	<i>YES</i>	<i>WRONG HEIGHT</i>
15	$7x^2 + 4x - 7$	<i>no</i>	<i>YES</i>	<i>WRONG HEIGHT</i>
16	$-3x^2 - 7x + 7$	<i>no</i>	<i>YES</i>	<i>WRONG HEIGHT</i>
17	$-4x^2 + 7x - 3$	<i>YES</i>	<i>YES</i>	
18	$11x^2 - 3x - 4$	<i>YES</i>	<i>YES</i>	
19	$-14x^2 - 4x + 11$	<i>no</i>	<i>YES</i>	<i>WRONG HEIGHT</i>
20	$10x^2 + 11x - 14$	<i>no</i>	<i>YES</i>	<i>WRONG HEIGHT</i>
21	$x^2 - 14x + 10$	<i>YES</i>	<i>YES</i>	
22	$-15x^2 + 10x + 1$	<i>YES</i>	<i>YES</i>	
23	$25x^2 + x - 15$	<i>no</i>	<i>YES</i>	<i>WRONG HEIGHT</i>
24	$-24x^2 - 15x + 25$	<i>no</i>	<i>YES</i>	<i>WRONG HEIGHT</i>
25	$9x^2 + 25x - 24$	<i>no</i>	<i>YES</i>	<i>WRONG HEIGHT</i>
26	$16x^2 - 24x + 9$	<i>YES</i>	<i>YES</i>	
27	$-40x^2 + 9x + 16$	<i>YES</i>	<i>YES</i>	
28	$49x^2 + 16x - 40$	<i>no</i>	<i>YES</i>	<i>WRONG HEIGHT</i>
29	$-33x^2 - 40x + 49$	<i>no</i>	<i>YES</i>	<i>WRONG HEIGHT</i>
30	$-7x^2 + 49x - 33$	<i>YES</i>	<i>YES</i>	
31	$56x^2 - 33x - 7$	<i>YES</i>	<i>YES</i>	
32	$-89x^2 - 7x + 56$	<i>no</i>	<i>YES</i>	<i>WRONG HEIGHT</i>
33	$82x^2 + 56x - 89$	<i>no</i>	<i>YES</i>	<i>WRONG HEIGHT</i>
34	$-26x^2 - 89x + 82$	<i>no</i>	<i>YES</i>	<i>WRONG HEIGHT</i>
35	$-63x^2 + 82x - 26$	<i>YES</i>	<i>YES</i>	
36	$145x^2 - 26x - 63$	<i>YES</i>	<i>YES</i>	
37	$-171x^2 - 63x + 145$	<i>no</i>	<i>YES</i>	<i>WRONG HEIGHT</i>
38	$108x^2 + 145x - 171$	<i>no</i>	<i>YES</i>	<i>WRONG HEIGHT</i>
39	$37x^2 - 171x + 108$	<i>YES</i>	<i>YES</i>	
40	$-208x^2 + 108x + 37$	<i>YES</i>	<i>YES</i>	

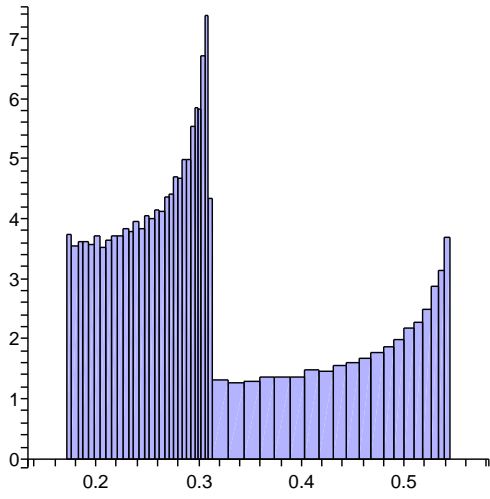
41	$316x^2 + 37x - 208$	<i>no</i>	<i>YES</i>	<i>WRONG HEIGHT</i>
42	$-279x^2 - 208x + 316$	<i>no</i>	<i>YES</i>	<i>WRONG HEIGHT</i>
43	$71x^2 + 316x - 279$	<i>no</i>	<i>YES</i>	<i>WRONG HEIGHT</i>
44	$245x^2 - 279x + 71$	<i>YES</i>	<i>YES</i>	
45	$-524x^2 + 71x + 245$	<i>YES</i>	<i>YES</i>	
46	$595x^2 + 245x - 524$	<i>no</i>	<i>YES</i>	<i>WRONG HEIGHT</i>
47	$-350x^2 - 524x + 595$	<i>no</i>	<i>YES</i>	<i>WRONG HEIGHT</i>
48	$-174x^2 + 595x - 350$	<i>YES</i>	<i>YES</i>	
49	$769x^2 - 350x - 174$	<i>YES</i>	<i>YES</i>	
50	$-1119x^2 - 174x + 769$	<i>no</i>	<i>YES</i>	<i>WRONG HEIGHT</i>
51	$945x^2 + 769x - 1119$	<i>no</i>	<i>YES</i>	<i>WRONG HEIGHT</i>
52	$-176x^2 - 1119x + 945$	<i>no</i>	<i>YES</i>	<i>WRONG HEIGHT</i>
53	$-943x^2 + 945x - 176$	<i>YES</i>	<i>YES</i>	
54	$1888x^2 - 176x - 943$	<i>YES</i>	<i>YES</i>	
55	$-2064x^2 - 943x + 1888$	<i>no</i>	<i>YES</i>	<i>WRONG HEIGHT</i>
56	$1121x^2 + 1888x - 2064$	<i>no</i>	<i>YES</i>	<i>WRONG HEIGHT</i>
57	$767x^2 - 2064x + 1121$	<i>YES</i>	<i>YES</i>	
58	$-2831x^2 + 1121x + 767$	<i>YES</i>	<i>YES</i>	
59	$3952x^2 + 767x - 2831$	<i>no</i>	<i>YES</i>	<i>WRONG HEIGHT</i>
60	$-3185x^2 - 2831x + 3952$	<i>no</i>	<i>YES</i>	<i>WRONG HEIGHT</i>
61	$354x^2 + 3952x - 3185$	<i>no</i>	<i>YES</i>	<i>WRONG HEIGHT</i>
62	$3598x^2 - 3185x + 354$	<i>YES</i>	<i>YES</i>	
63	$-6783x^2 + 354x + 3598$	<i>YES</i>	<i>YES</i>	
64	$7137x^2 + 3598x - 6783$	<i>no</i>	<i>YES</i>	<i>WRONG HEIGHT</i>
65	$-3539x^2 - 6783x + 7137$	<i>no</i>	<i>YES</i>	<i>WRONG HEIGHT</i>
66	$-3244x^2 + 7137x - 3539$	<i>YES</i>	<i>YES</i>	
67	$10381x^2 - 3539x - 3244$	<i>YES</i>	<i>YES</i>	
68	$-13920x^2 - 3244x + 10381$	<i>no</i>	<i>YES</i>	<i>WRONG HEIGHT</i>
69	$10676x^2 + 10381x - 13920$	<i>no</i>	<i>YES</i>	<i>WRONG HEIGHT</i>
70	$-295x^2 - 13920x + 10676$	<i>no</i>	<i>YES</i>	<i>WRONG HEIGHT</i>
71	$-13625x^2 + 10676x - 295$	<i>YES</i>	<i>YES</i>	
72	$24301x^2 - 295x - 13625$	<i>YES</i>	<i>YES</i>	
73	$-24596x^2 - 13625x + 24301$	<i>no</i>	<i>YES</i>	<i>WRONG HEIGHT</i>
74	$10971x^2 + 24301x - 24596$	<i>no</i>	<i>YES</i>	<i>WRONG HEIGHT</i>
75	$13330x^2 - 24596x + 10971$	<i>YES</i>	<i>YES</i>	
76	$-37926x^2 + 10971x + 13330$	<i>YES</i>	<i>YES</i>	
77	$48897x^2 + 13330x - 37926$	<i>no</i>	<i>YES</i>	<i>WRONG HEIGHT</i>
78	$-35567x^2 - 37926x + 48897$	<i>no</i>	<i>YES</i>	<i>WRONG HEIGHT</i>
79	$-2359x^2 + 48897x - 35567$	<i>YES</i>	<i>YES</i>	
80	$51256x^2 - 35567x - 2359$	<i>YES</i>	<i>YES</i>	

81	$-86823x^2 - 2359x + 51256$	<i>no</i>	<i>YES</i>	<i>WRONG HEIGHT</i>
82	$84464x^2 + 51256x - 86823$	<i>no</i>	<i>YES</i>	<i>WRONG HEIGHT</i>
83	$-33208x^2 - 86823x + 84464$	<i>no</i>	<i>YES</i>	<i>WRONG HEIGHT</i>
84	$-53615x^2 + 84464x - 33208$	<i>YES</i>	<i>YES</i>	
85	$138079x^2 - 33208x - 53615$	<i>YES</i>	<i>YES</i>	
86	$-171287x^2 - 53615x + 138079$	<i>no</i>	<i>YES</i>	<i>WRONG HEIGHT</i>
87	$117672x^2 + 138079x - 171287$	<i>no</i>	<i>YES</i>	<i>WRONG HEIGHT</i>
88	$20407x^2 - 171287x + 117672$	<i>YES</i>	<i>YES</i>	
89	$-191694x^2 + 117672x + 20407$	<i>YES</i>	<i>YES</i>	
90	$309366x^2 + 20407x - 191694$	<i>no</i>	<i>YES</i>	<i>WRONG HEIGHT</i>
91	$-288959x^2 - 191694x + 309366$	<i>no</i>	<i>YES</i>	<i>WRONG HEIGHT</i>
92	$97265x^2 + 309366x - 288959$	<i>no</i>	<i>YES</i>	<i>WRONG HEIGHT</i>
93	$212101x^2 - 288959x + 97265$	<i>YES</i>	<i>YES</i>	
94	$-501060x^2 + 97265x + 212101$	<i>YES</i>	<i>YES</i>	
95	$598325x^2 + 212101x - 501060$	<i>no</i>	<i>YES</i>	<i>WRONG HEIGHT</i>
96	$-386224x^2 - 501060x + 598325$	<i>no</i>	<i>YES</i>	<i>WRONG HEIGHT</i>
97	$-114836x^2 + 598325x - 386224$	<i>YES</i>	<i>YES</i>	
98	$713161x^2 - 386224x - 114836$	<i>YES</i>	<i>YES</i>	
99	$-1099385x^2 - 114836x + 713161$	<i>no</i>	<i>YES</i>	<i>WRONG HEIGHT</i>
100	$984549x^2 + 713161x - 1099385$	<i>no</i>	<i>YES</i>	<i>WRONG HEIGHT</i>
101	$-271388x^2 - 1099385x + 984549$	<i>no</i>	<i>YES</i>	<i>WRONG HEIGHT</i>
102	$-827997x^2 + 984549x - 271388$	<i>YES</i>	<i>YES</i>	
103	$1812546x^2 - 271388x - 827997$	<i>YES</i>	<i>YES</i>	
104	$-2083934x^2 - 827997x + 1812546$	<i>no</i>	<i>YES</i>	<i>WRONG HEIGHT</i>
105	$1255937x^2 + 1812546x - 2083934$	<i>no</i>	<i>YES</i>	<i>WRONG HEIGHT</i>
106	$556609x^2 - 2083934x + 1255937$	<i>YES</i>	<i>YES</i>	
107	$-2640543x^2 + 1255937x + 556609$	<i>YES</i>	<i>YES</i>	
108	$3896480x^2 + 556609x - 2640543$	<i>no</i>	<i>YES</i>	<i>WRONG HEIGHT</i>
109	$-3339871x^2 - 2640543x + 3896480$	<i>no</i>	<i>YES</i>	<i>WRONG HEIGHT</i>
110	$699328x^2 + 3896480x - 3339871$	<i>no</i>	<i>YES</i>	<i>WRONG HEIGHT</i>
111	$3197152x^2 - 3339871x + 699328$	<i>YES</i>	<i>YES</i>	
112	$-6537023x^2 + 699328x + 3197152$	<i>YES</i>	<i>YES</i>	
113	$7236351x^2 + 3197152x - 6537023$	<i>no</i>	<i>YES</i>	<i>WRONG HEIGHT</i>
114	$-4039199x^2 - 6537023x + 7236351$	<i>no</i>	<i>YES</i>	<i>WRONG HEIGHT</i>
115	$-2497824x^2 + 7236351x - 4039199$	<i>YES</i>	<i>YES</i>	
116	$9734175x^2 - 4039199x - 2497824$	<i>YES</i>	<i>YES</i>	
117	$-13773374x^2 - 2497824x + 9734175$	<i>no</i>	<i>YES</i>	<i>WRONG HEIGHT</i>
118	$11275550x^2 + 9734175x - 13773374$	<i>no</i>	<i>YES</i>	<i>WRONG HEIGHT</i>
119	$-1541375x^2 - 13773374x + 11275550$	<i>no</i>	<i>YES</i>	<i>WRONG HEIGHT</i>
120	$-12231999x^2 + 11275550x - 1541375$	<i>YES</i>	<i>YES</i>	

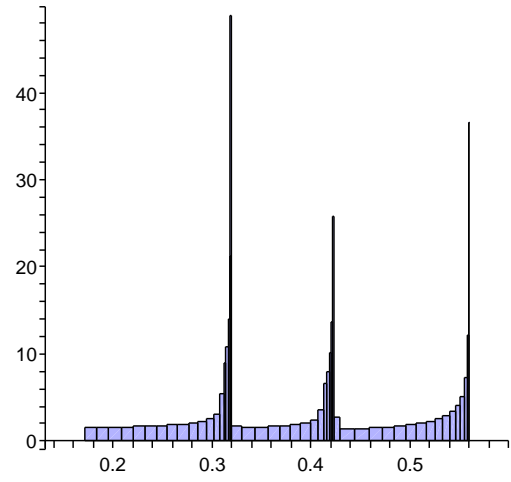
121	$23507549x^2 - 1541375x - 12231999$	YES	YES	
122	$-25048924x^2 - 12231999x + 23507549$	no	YES	WRONG HEIGHT
123	$12816925x^2 + 23507549x - 25048924$	no	YES	WRONG HEIGHT
124	$10690624x^2 - 25048924x + 12816925$	YES	YES	
125	$-35739548x^2 + 12816925x + 10690624$	YES	YES	
126	$48556473x^2 + 10690624x - 35739548$	no	YES	WRONG HEIGHT
127	$-37865849x^2 - 35739548x + 48556473$	no	YES	WRONG HEIGHT
128	$2126301x^2 + 48556473x - 37865849$	no	YES	WRONG HEIGHT
129	$46430172x^2 - 37865849x + 2126301$	YES	YES	
130	$-84296021x^2 + 2126301x + 46430172$	YES	YES	
131	$86422322x^2 + 46430172x - 84296021$	no	YES	WRONG HEIGHT
132	$-39992150x^2 - 84296021x + 86422322$	no	YES	WRONG HEIGHT
133	$-44303871x^2 + 86422322x - 39992150$	YES	YES	
134	$130726193x^2 - 39992150x - 44303871$	YES	YES	
135	$-170718343x^2 - 44303871x + 130726193$	no	YES	WRONG HEIGHT
136	$126414472x^2 + 130726193x - 170718343$	no	YES	WRONG HEIGHT
137	$4311721x^2 - 170718343x + 126414472$	YES	YES	
138	$-175030064x^2 + 126414472x + 4311721$	YES	YES	
139	$301444536x^2 + 4311721x - 175030064$	no	YES	WRONG HEIGHT
140	$-297132815x^2 - 175030064x + 301444536$	no	YES	WRONG HEIGHT
141	$122102751x^2 + 301444536x - 297132815$	no	YES	WRONG HEIGHT
142	$179341785x^2 - 297132815x + 122102751$	YES	YES	
143	$-476474600x^2 + 122102751x + 179341785$	YES	YES	
144	$598577351x^2 + 179341785x - 476474600$	no	YES	WRONG HEIGHT
145	$-419235566x^2 - 476474600x + 598577351$	no	YES	WRONG HEIGHT
146	$-57239034x^2 + 598577351x - 419235566$	YES	YES	
147	$655816385x^2 - 419235566x - 57239034$	YES	YES	
148	$-1075051951x^2 - 57239034x + 655816385$	no	YES	WRONG HEIGHT
149	$1017812917x^2 + 655816385x - 1075051951$	no	YES	WRONG HEIGHT
150	$-361996532x^2 - 1075051951x + 1017812917$	no	YES	WRONG HEIGHT
151	$-713055419x^2 + 1017812917x - 361996532$	YES	YES	
152	$1730868336x^2 - 361996532x - 713055419$	YES	YES	
153	$-2092864868x^2 - 713055419x + 1730868336$	no	YES	WRONG HEIGHT
154	$1379809449x^2 + 1730868336x - 2092864868$	no	YES	WRONG HEIGHT
155	$351058887x^2 - 2092864868x + 1379809449$	YES	YES	
156	$-2443923755x^2 + 1379809449x + 351058887$	YES	YES	
157	$3823733204x^2 + 351058887x - 2443923755$	no	YES	WRONG HEIGHT
158	$-3472674317x^2 - 2443923755x + 3823733204$	no	YES	WRONG HEIGHT
159	$1028750562x^2 + 3823733204x - 3472674317$	no	YES	WRONG HEIGHT
160	$2794982642x^2 - 3472674317x + 1028750562$	YES	YES	

161	$-6267656959x^2 + 1028750562x + 2794982642$	YES	YES	
162	$7296407521x^2 + 2794982642x - 6267656959$	no	YES	WRONG HEIGHT
163	$-4501424879x^2 - 6267656959x + 7296407521$	no	YES	WRONG HEIGHT
164	$-1766232080x^2 + 7296407521x - 4501424879$	YES	YES	
165	$9062639601x^2 - 4501424879x - 1766232080$	YES	YES	
166	$-13564064480x^2 - 1766232080x + 9062639601$	no	YES	WRONG HEIGHT
167	$11797832400x^2 + 9062639601x - 13564064480$	no	YES	WRONG HEIGHT
168	$-2735192799x^2 - 13564064480x + 11797832400$	no	YES	WRONG HEIGHT
169	$-10828871681x^2 + 11797832400x - 2735192799$	YES	YES	
170	$22626704081x^2 - 2735192799x - 10828871681$	YES	YES	
171	$-25361896880x^2 - 10828871681x + 22626704081$	no	YES	WRONG HEIGHT
172	$14533025199x^2 + 22626704081x - 25361896880$	no	YES	WRONG HEIGHT
173	$8093678882x^2 - 25361896880x + 14533025199$	YES	YES	
174	$-33455575762x^2 + 14533025199x + 8093678882$	YES	YES	
175	$47988600961x^2 + 8093678882x - 33455575762$	no	YES	WRONG HEIGHT
176	$-39894922079x^2 - 33455575762x + 47988600961$	no	YES	WRONG HEIGHT
177	$6439346317x^2 + 47988600961x - 39894922079$	no	YES	WRONG HEIGHT
178	$41549254644x^2 - 39894922079x + 6439346317$	YES	YES	
179	$-81444176723x^2 + 6439346317x + 41549254644$	YES	YES	
180	$87883523040x^2 + 41549254644x - 81444176723$	no	YES	WRONG HEIGHT
181	$-46334268396x^2 - 81444176723x + 87883523040$	no	YES	WRONG HEIGHT
182	$-35109908327x^2 + 87883523040x - 46334268396$	YES	YES	
183	$122993431367x^2 - 46334268396x - 35109908327$	YES	YES	
184	$-169327699763x^2 - 35109908327x + 122993431367$	no	YES	WRONG HEIGHT
185	$134217791436x^2 + 122993431367x - 169327699763$	no	YES	WRONG HEIGHT
186	$-11224360069x^2 - 169327699763x + 134217791436$	no	YES	WRONG HEIGHT
187	$-158103339694x^2 + 134217791436x - 11224360069$	YES	YES	
188	$292321131130x^2 - 11224360069x - 158103339694$	YES	YES	
189	$-303545491199x^2 - 158103339694x + 292321131130$	no	YES	WRONG HEIGHT
190	$145442151505x^2 + 292321131130x - 303545491199$	no	YES	WRONG HEIGHT
191	$146878979625x^2 - 303545491199x + 145442151505$	YES	YES	
192	$-450424470824x^2 + 145442151505x + 146878979625$	YES	YES	
193	$595866622329x^2 + 146878979625x - 450424470824$	no	YES	WRONG HEIGHT
194	$-448987642704x^2 - 450424470824x + 595866622329$	no	YES	WRONG HEIGHT
195	$-1436828120x^2 + 595866622329x - 448987642704$	YES	YES	
196	$597303450449x^2 - 448987642704x - 1436828120$	YES	YES	
197	$-1046291093153x^2 - 1436828120x + 597303450449$	no	YES	WRONG HEIGHT
198	$1044854265033x^2 + 597303450449x - 1046291093153$	no	YES	WRONG HEIGHT
199	$-447550814584x^2 - 1046291093153x + 1044854265033$	no	YES	WRONG HEIGHT
200	$-598740278569x^2 + 1044854265033x - 447550814584$	YES	YES	

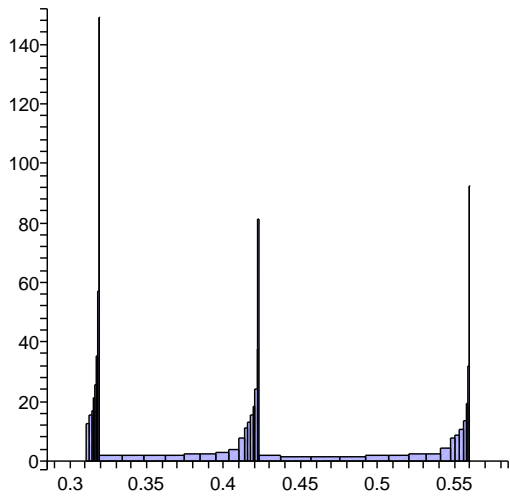
201	$1643594543602x^2 - 447550814584x - 598740278569$	YES	YES	
202	$-2091145358186x^2 - 598740278569x + 1643594543602$	no	YES	WRONG HEIGHT
203	$1492405079617x^2 + 1643594543602x - 2091145358186$	no	YES	WRONG HEIGHT
204	$151189463985x^2 - 2091145358186x + 1492405079617$	YES	YES	
205	$-2242334822171x^2 + 1492405079617x + 151189463985$	YES	YES	
206	$3734739901788x^2 + 151189463985x - 2242334822171$	no	YES	WRONG HEIGHT
207	$-3583550437803x^2 - 2242334822171x + 3734739901788$	no	YES	WRONG HEIGHT
208	$1341215615632x^2 + 3734739901788x - 3583550437803$	no	YES	WRONG HEIGHT
209	$2393524286156x^2 - 3583550437803x + 1341215615632$	YES	YES	
210	$-5977074723959x^2 + 1341215615632x + 2393524286156$	YES	YES	
211	$7318290339591x^2 + 2393524286156x - 5977074723959$	no	YES	WRONG HEIGHT
212	$-4924766053435x^2 - 5977074723959x + 7318290339591$	no	YES	WRONG HEIGHT
213	$-1052308670524x^2 + 7318290339591x - 4924766053435$	YES	YES	
214	$8370599010115x^2 - 4924766053435x - 1052308670524$	YES	YES	
215	$-13295365063550x^2 - 1052308670524x + 8370599010115$	no	YES	WRONG HEIGHT
216	$12243056393026x^2 + 8370599010115x - 13295365063550$	no	YES	WRONG HEIGHT
217	$-3872457382911x^2 - 13295365063550x + 12243056393026$	no	YES	WRONG HEIGHT
218	$-9422907680639x^2 + 12243056393026x - 3872457382911$	YES	YES	
219	$21665964073665x^2 - 3872457382911x - 9422907680639$	YES	YES	
220	$-25538421456576x^2 - 9422907680639x + 21665964073665$	no	YES	WRONG HEIGHT
221	$16115513775937x^2 + 21665964073665x - 25538421456576$	no	YES	WRONG HEIGHT
222	$5550450297728x^2 - 25538421456576x + 16115513775937$	YES	YES	
223	$-31088871754304x^2 + 16115513775937x + 5550450297728$	YES	YES	
224	$47204385530241x^2 + 5550450297728x - 31088871754304$	no	YES	WRONG HEIGHT
225	$-41653935232513x^2 - 31088871754304x + 47204385530241$	no	YES	WRONG HEIGHT
226	$10565063478209x^2 + 47204385530241x - 41653935232513$	no	YES	WRONG HEIGHT
227	$36639322052032x^2 - 41653935232513x + 10565063478209$	YES	YES	
228	$-78293257284545x^2 + 10565063478209x + 36639322052032$	YES	YES	
229	$88858320762754x^2 + 36639322052032x - 78293257284545$	no	YES	WRONG HEIGHT
230	$-52218998710722x^2 - 78293257284545x + 88858320762754$	no	YES	WRONG HEIGHT
231	$-26074258573823x^2 + 88858320762754x - 52218998710722$	YES	YES	
232	$114932579336577x^2 - 52218998710722x - 26074258573823$	YES	YES	
233	$-167151578047299x^2 - 26074258573823x + 114932579336577$	no	YES	WRONG HEIGHT
234	$141077319473476x^2 + 114932579336577x - 167151578047299$	no	YES	WRONG HEIGHT
235	$-26144740136899x^2 - 167151578047299x + 141077319473476$	no	YES	WRONG HEIGHT
236	$-141006837910400x^2 + 141077319473476x - 26144740136899$	YES	YES	
237	$282084157383876x^2 - 26144740136899x - 141006837910400$	YES	YES	
238	$-308228897520775x^2 - 141006837910400x + 282084157383876$	no	YES	WRONG HEIGHT
239	$167222059610375x^2 + 282084157383876x - 308228897520775$	no	YES	WRONG HEIGHT
240	$114862097773501x^2 - 308228897520775x + 167222059610375$	YES	YES	



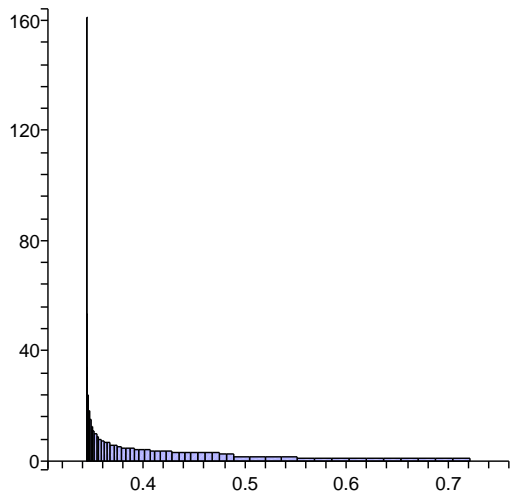
“All” polynomials, norm L_∞



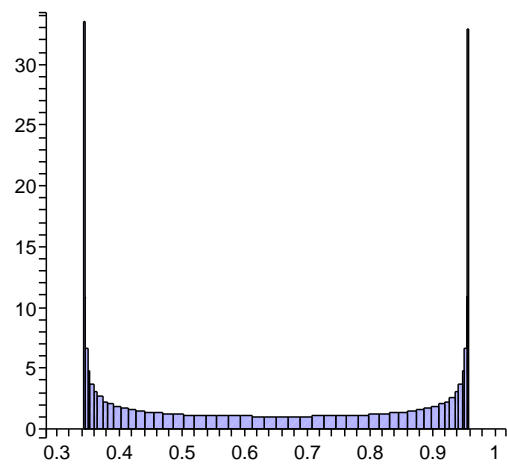
Period $[1, 0, -1, 1]$, norm L_∞



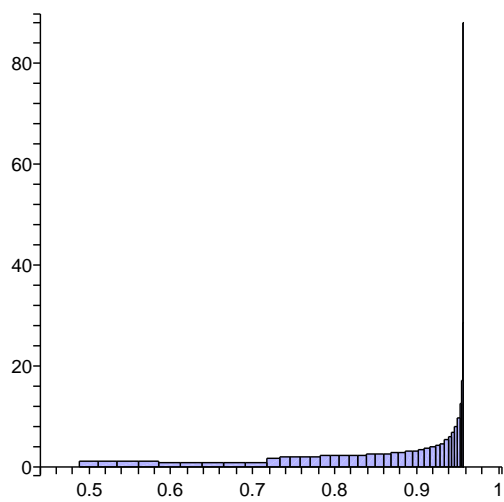
Period $[1, 0, -1, 1]$, norm L_∞ , no-YES



“All” polynomials, norm L_2



Period $[1, 0, -1, 1]$, norm L_2



Period $[1, 0, -1, 1]$, norm L_2 , no-YES

Number: $\xi = 0.7548\dots$ Equation: $x^3 + x^2 - 1 = 0$. $[1, 0, -1, 1]$. Sorted minimums with norm L_∞ .

1	0.1712141363	236	41	0.1736492457	2856	81	0.1762917868	5293	121	0.1787193333	7913
2	0.1712265682	9685	42	0.1737609869	7489	82	0.1763656482	7797	122	0.1787884571	9078
3	0.1713260172	4869	43	0.1737898457	1700	83	0.1763909510	477	123	0.1788183248	3097
4	0.1713656166	9868	44	0.1738603062	2673	84	0.1764033465	9926	124	0.1789296817	7730
5	0.1713857801	419	45	0.1739517948	6516	85	0.1765025033	5110	125	0.1789720535	4445
6	0.1714254617	53	46	0.1739720340	7306	86	0.1765485758	3164	126	0.1790286571	2914
7	0.1714378923	9502	47	0.1740713413	2490	87	0.1766016534	294	127	0.1791352916	9261
8	0.1715373314	4686	48	0.1741340377	1883	88	0.1766140472	9743	128	0.1791399958	7547
9	0.1715471056	5235	49	0.1741830556	7123	89	0.1767112203	7980	129	0.1792389550	2731
10	0.1716491953	9319	50	0.1742823508	2307	90	0.1767131898	4927	130	0.1793189822	4628
11	0.1717286482	602	51	0.1742960748	6699	91	0.1768123257	111	131	0.1793502753	7364
12	0.1717486245	4503	52	0.1743940513	6940	92	0.1768247177	9560	132	0.1794492181	2548
13	0.1718604770	9136	53	0.1744784165	2066	93	0.1768942444	3347	133	0.1794823039	9444
14	0.1718900637	5418	54	0.1744933342	2124	94	0.1769238460	4744	134	0.1795605198	7181
15	0.1719598959	4320	55	0.1746050208	6757	95	0.1770353576	9377	135	0.1796594460	2365
16	0.1720717073	785	56	0.1746405412	6882	96	0.1770569746	8163	136	0.1796660884	4811
17	0.1720717368	8953	57	0.1747042911	1941	97	0.1771344714	4561	137	0.1797707290	6998
18	0.1721711454	4137	58	0.1748159636	6574	98	0.1772400949	3530	138	0.1798294934	9627
19	0.1722332124	5601	59	0.1748229813	2249	99	0.1772459667	9194	139	0.1798499225	178
20	0.1722829745	8770	60	0.1749152213	1758	100	0.1773450658	4378	140	0.1798696384	2182
21	0.1723823725	3954	61	0.1749851934	7065	101	0.1774029105	8346	141	0.1799809024	6815
22	0.1724149567	968	62	0.1750268795	6391	102	0.1774565444	9011	142	0.1800133716	4994
23	0.1724941897	8587	63	0.1751261243	1575	103	0.1775556287	4195	143	0.1800797949	1999
24	0.1725765512	5784	64	0.1751677317	2432	104	0.1775861266	3713	144	0.1801768597	9810
25	0.1725935770	3771	65	0.1752377679	6208	105	0.1776670905	8828	145	0.1801910397	6632
26	0.1727053820	8404	66	0.1753300308	7248	106	0.1777490273	8529	146	0.1801972991	361
27	0.1727583958	1151	67	0.1753369998	1392	107	0.1777661598	4012	147	0.1802899151	1816
28	0.1728047584	3588	68	0.1754486287	6025	108	0.1778776046	8645	148	0.1803608311	5177
29	0.1729165510	8221	69	0.1755126669	2615	109	0.1779323389	3896	149	0.1804011405	6449
30	0.1729200794	5967	70	0.1755478474	1209	110	0.1779766587	3829	150	0.1804999986	1633
31	0.1730159163	3405	71	0.1756594613	5842	111	0.1780880863	8462	151	0.1805448518	544
32	0.1731020241	1334	72	0.1756750528	7431	112	0.1780953244	8712	152	0.1806112045	6266
33	0.1731276964	8038	73	0.1757586666	1026	113	0.1781871250	3646	153	0.1807084663	5360
34	0.1732270504	3222	74	0.1758577864	2798	114	0.1782787313	4079	154	0.1807100451	1450
35	0.1732637965	6150	75	0.1758702655	5659	115	0.1782985352	8279	155	0.1808212313	6083
36	0.1733388177	7855	76	0.1759694573	843	116	0.1783975584	3463	156	0.1808925797	727
37	0.1734381604	3039	77	0.1760202588	7614	117	0.1784418012	8895	157	0.1809200542	1267
38	0.1734458409	1517	78	0.1760810408	5476	118	0.1785089510	8096	158	0.1810312205	5900
39	0.1735499147	7672	79	0.1761802188	660	119	0.1786079584	3280	159	0.1810562766	5543
40	0.1736077018	6333	80	0.1762030895	2981	120	0.1786253030	4262	160	0.1811300256	1084

161	0.1812404825	910	201	0.1836806442	2191	241	0.1862676503	1325	281	0.1886729783	3945
162	0.1812411717	5717	202	0.1837574905	3521	242	0.1862940259	8288	282	0.1887511595	9569
163	0.1813399588	901	203	0.1838449892	7007	243	0.1863782410	5958	283	0.1887718421	120
164	0.1814042614	5726	204	0.1838683676	8154	244	0.1864765323	1142	284	0.1887832673	8578
165	0.1814510846	5534	205	0.1839669145	3338	245	0.1864795795	3655	285	0.1888812894	3762
166	0.1815498535	718	206	0.1840299231	2374	246	0.1865870978	5775	286	0.1889373169	4936
167	0.1815885595	1093	207	0.1840777688	7971	247	0.1866445542	8471	287	0.1889915510	8395
168	0.1816609587	5351	208	0.1841762954	3155	248	0.1866853667	959	288	0.1890895488	3579
169	0.1817524201	5909	209	0.1841943478	7190	249	0.1867959069	5592	289	0.1891028272	9752
170	0.1817597094	535	210	0.1842871267	7788	250	0.1868301950	3838	290	0.1891235193	303
171	0.1818707938	5168	211	0.1843793712	2557	251	0.1868941531	776	291	0.1891997828	8212
172	0.1819368100	1276	212	0.1843856328	2972	252	0.1869952471	8654	292	0.1892890695	5119
173	0.1819695259	352	213	0.1844964409	7605	253	0.1870046678	5409	293	0.1892977559	3396
174	0.1819818673	9801	214	0.1845438754	7373	254	0.1871028913	593	294	0.1894079622	8029
175	0.1820805895	4985	215	0.1845949263	2789	255	0.1871809748	4021	295	0.1894546552	9935
176	0.1821007521	6092	216	0.1847057110	7422	256	0.1872133802	5226	296	0.1894753567	486
177	0.1821793029	169	217	0.1847289879	2740	257	0.1873115808	410	297	0.1895059106	3213
178	0.1821916419	9618	218	0.1848041755	2606	258	0.1873238555	9859	298	0.1896160889	7846
179	0.1822852334	1459	219	0.1848935713	7556	259	0.1873461040	8837	299	0.1896409821	5302
180	0.1822903454	4802	220	0.1849149367	7239	260	0.1874220438	5043	300	0.1897140123	3030
181	0.1824013765	9435	221	0.1850133802	2423	261	0.1875202212	227	301	0.1898241624	7663
182	0.1824492567	6275	222	0.1850373752	4	262	0.1875319184	4204	302	0.1898273537	669
183	0.1825000610	4619	223	0.1850787727	2923	263	0.1875324930	9676	303	0.1899220607	2847
184	0.1826110708	9252	224	0.1851241176	7056	264	0.1876306581	4860	304	0.1899930541	5485
185	0.1826338291	1642	225	0.1852225398	2240	265	0.1876971244	9020	305	0.1900321825	7480
186	0.1827097361	4436	226	0.1852434349	7739	266	0.1877288104	44	306	0.1901300554	2664
187	0.1827979333	6458	227	0.1853332533	6873	267	0.1877410811	9493	307	0.1901795098	852
188	0.1828207243	9069	228	0.1854287248	3106	268	0.1878392228	4677	308	0.1902401487	7297
189	0.1829193703	4253	229	0.1854316541	2057	269	0.1878830250	4387	309	0.1903379962	2481
190	0.1829825966	1825	230	0.1855423434	6690	270	0.1879496194	9310	310	0.1903452847	5668
191	0.1830303367	8886	231	0.1855934656	7922	271	0.1880477376	4494	311	0.1904480607	7114
192	0.1831289632	4070	232	0.1856407227	1874	272	0.1880483075	9203	312	0.1905318242	1035
193	0.1831467814	6641	233	0.1857513876	6507	273	0.1881581076	9127	313	0.1905458826	2298
194	0.1832399076	8703	234	0.1857788438	3289	274	0.1882342940	4570	314	0.1906559181	6931
195	0.1833315351	2008	235	0.1858497451	1691	275	0.1882562020	4311	315	0.1906976735	5851
196	0.1833385145	3887	236	0.1859436628	8105	276	0.1883665452	8944	316	0.1907537142	2115
197	0.1834494366	8520	237	0.1859603855	6324	277	0.1883996528	9386	317	0.1908637206	6748
198	0.1834958002	6824	238	0.1860587211	1508	278	0.1884646156	4128	318	0.1908842964	1218
199	0.1835480237	3704	239	0.1861291288	3472	279	0.1885749319	8761	319	0.1909614907	1932
200	0.1836589234	8337	240	0.1861693368	6141	280	0.1885857248	4753	320	0.1910502197	6034

321	0.1910714678	6565	361	0.1935224005	7315	401	0.1961490518	6806	441	0.1984137402	4793
322	0.1911692117	1749	362	0.1935599862	4369	402	0.1961898882	3963	442	0.1984889636	9877
323	0.1912369258	1401	363	0.1936695794	9002	403	0.1962461002	1990	443	0.1985098928	428
324	0.1912791593	6382	364	0.1937096791	2682	404	0.1963552630	6623	444	0.1985225305	9426
325	0.1913768769	1566	365	0.1937669810	4186	405	0.1963568868	8779	445	0.1986192164	4610
326	0.1914029228	6217	366	0.1938761841	7498	406	0.1964522809	1807	446	0.1986773388	5244
327	0.1914867947	6199	367	0.1938765422	8819	407	0.1965448000	4146	447	0.1987279702	9243
328	0.1915844858	1383	368	0.1939739153	4003	408	0.1965614092	6440	448	0.1988246236	4427
329	0.1915897116	1584	369	0.1940635432	2865	409	0.1966583964	1624	449	0.1988657541	611
330	0.1916943738	6016	370	0.1940834444	8636	410	0.1967118679	8962	450	0.1989333408	9060
331	0.1917557822	6400	371	0.1941807889	3820	411	0.1967674901	6257	451	0.1990299615	4244
332	0.1917920382	1200	372	0.1942301196	7681	412	0.1968644464	1441	452	0.1990332674	5427
333	0.1919018960	5833	373	0.1942902857	8453	413	0.1968998588	4329	453	0.1991386418	8877
334	0.1919426534	1767	374	0.1943876013	3637	414	0.1969735052	6074	454	0.1992217585	794
335	0.1919995336	1017	375	0.1944175588	3048	415	0.1970669958	9145	455	0.1992352296	4061
336	0.1921087971	6583	376	0.1944970655	8270	416	0.1970704305	1258	456	0.1993438728	8694
337	0.1921093611	5650	377	0.1945842063	7864	417	0.1971794543	5891	457	0.1993893389	5610
338	0.1922069717	834	378	0.1945943522	3454	418	0.1972550643	4512	458	0.1994404277	3878
339	0.1922957505	1950	379	0.1947037837	8087	419	0.1972763483	1075	459	0.1995490336	8511
340	0.1923167687	5467	380	0.1947717254	3231	420	0.1973853368	5708	460	0.1995779052	977
341	0.1924143521	651	381	0.1948010411	3271	421	0.1974222699	9328	461	0.1996455553	3695
342	0.1924619670	6766	382	0.1949104397	7904	422	0.1974821995	892	462	0.1997455525	5793
343	0.1925241185	5284	383	0.1949384437	8047	423	0.1975911526	5525	463	0.1997541238	8328
344	0.1926216745	468	384	0.1950076678	3088	424	0.1976104156	4695	464	0.1998506121	3512
345	0.1926338685	9917	385	0.1951170333	7721	425	0.1976879837	709	465	0.1999341938	1160
346	0.1926490022	2133	386	0.1951260422	3414	426	0.1977776897	9511	466	0.1999591430	8145
347	0.1927314100	5101	387	0.1952142319	2905	427	0.1977969012	5342	467	0.2000555977	3329
348	0.1928152913	6949	388	0.1952928310	8230	428	0.1977986020	62	468	0.2001019076	5976
349	0.1928289384	285	389	0.1953235641	7538	429	0.1978937005	526	469	0.2001640908	7962
350	0.1928411290	9734	390	0.1954207330	2722	430	0.1979057998	9975	470	0.2002605118	3146
351	0.1929386428	4918	391	0.1954805087	3597	431	0.1979659122	4878	471	0.2002906236	1343
352	0.1930024080	2316	392	0.1955300317	7355	432	0.1980025822	5159	472	0.2003689669	7779
353	0.1930361436	102	393	0.1956271708	2539	433	0.1980993496	343	473	0.2004584035	6159
354	0.1930483307	9551	394	0.1956473677	8413	434	0.1981114449	9792	474	0.2004653540	2963
355	0.1931458167	4735	395	0.1957364358	7172	435	0.1981332545	9694	475	0.2005737708	7596
356	0.1931687693	7132	396	0.1958335448	2356	436	0.1981541753	245	476	0.2006471939	1526
357	0.1932554733	9368	397	0.1958351243	3780	437	0.1982081953	4976	477	0.2006701240	2780
358	0.1933529313	4552	398	0.1959427759	6989	438	0.1983049307	160	478	0.2007785024	7413
359	0.1933559671	2499	399	0.1960020532	8596	439	0.1983170219	9609	479	0.2008150398	6342
360	0.1934625563	9185	400	0.1960398547	2173	440	0.1983215535	5061	480	0.2008748213	2597

1	{9449}
2	{4633, 4816}
3 – 5	{183, 4450, 4816}
6, 7	{183, 4267, 4633}
8	{183, 366, 4267}
9	{183, 366, 4084, 4267}
10	{183, 366, 4084}
11	{183, 366, 3901, 4084}
12	{183, 366, 3901}
13	{183, 366, 3718, 3901}
14	{183, 366, 3718}
15	{183, 366, 3535, 3718}
16	{183, 366, 3535}
17	{183, 366, 3352, 3535}
18	{183, 366, 3352}
19	{183, 366, 3169, 3352}
20	{183, 366, 3169}
21	{183, 366, 2986, 3169}
22	{183, 366, 2986}
23	{183, 366, 2803, 2986}
24	{183, 366, 2803}
25	{183, 366, 2620, 2803}
26	{183, 366, 2620}
27	{183, 366, 2437, 2620}
28	{183, 366, 2437}
29	{183, 366, 2254, 2437}
30	{183, 366, 2254}
31	{183, 366, 2071, 2254}
32	{183, 366, 2071}
33	{183, 366, 1888, 2071}
34	{183, 366, 1888}
35	{183, 366, 1705, 1888}
36	{183, 366, 1705}
37	{183, 366, 1522, 1705}
38	{183, 366, 1522}
39	{183, 366, 1339, 1522}
40	{183, 366, 1339}
41	{183, 366, 1156, 1339}
42	{183, 366, 1156}
43	{183, 366, 973, 1156}
44	{183, 366, 973}
45	{183, 366, 790, 973}
46	{183, 366, 790}
47	{183, 366, 607, 790}
48	{183, 366, 607}
49	{183, 366, 424, 607}
50	{183, 366, 424}
51	{183, 241, 366, 424}
52	{183, 241, 366}
53	{58, 183, 241, 366}
54	{58, 183, 366}
55 – 83	{58, 125, 183, 366}
84 – 88	{58, 125, 183, 241}
89 – 99	{58, 125, 183}

Number: $\xi = 0.7548\dots$ Equation: $x^3 + x^2 - 1 = 0$. $[1, 0, -1, 1]$. Sorted minimums with norm L_2 .

1	0.3441490240	6440	41	0.3441740544	4610	81	0.3442482514	7596	121	0.3443749727	6931
2	0.3441490922	6257	42	0.3441755201	3454	82	0.3442505297	9917	122	0.3443789300	5766
3	0.3441492070	1807	43	0.3441768876	9243	83	0.3442511472	468	123	0.3443833260	2298
4	0.3441493115	1441	44	0.3441781016	8270	84	0.3442531883	2780	124	0.3443864118	950
5	0.3441494969	6623	45	0.3441795333	4427	85	0.3442561547	5284	125	0.3443908784	7114
6	0.3441497014	6074	46	0.3441811490	3637	86	0.3442588855	7413	126	0.3443949720	5583
7	0.3441499663	1990	47	0.3441826529	9060	87	0.3442619314	651	127	0.3443995181	2481
8	0.3441501754	1258	48	0.3441839852	8453	88	0.3442640769	2597	128	0.3444027082	767
9	0.3441505109	6806	49	0.3441855532	4244	89	0.3442671934	5467	129	0.3444073249	7297
10	0.3441508518	5891	50	0.3441873190	3820	90	0.3442700605	7230	130	0.3444115547	5400
11	0.3441512668	2173	51	0.3441889592	8877	91	0.3442732564	834	131	0.3444162507	2664
12	0.3441515804	1075	52	0.3441904098	8636	92	0.3442755064	2414	132	0.3444195453	584
13	0.3441520660	6989	53	0.3441921141	4061	93	0.3442787730	5650	133	0.3444243120	7480
14	0.3441525432	5708	54	0.3441940301	4003	94	0.3442817763	7047	134	0.3444286780	5217
15	0.3441531083	2356	55	0.3441958066	8694	95	0.3442851223	1017	135	0.3444335240	2847
16	0.3441535264	892	56	0.3441973754	8819	96	0.3442874768	2231	136	0.3444369230	401
17	0.3441541622	7172	57	0.3441992161	3878	97	0.3442908934	5833	137	0.3444379621	9850
18	0.3441547757	5525	58	0.3442012821	4186	98	0.3442940330	6864	138	0.3444418396	7663
19	0.3441554909	2539	59	0.3442031950	8511	99	0.3442975291	1200	139	0.3444463419	5034
20	0.3441560136	709	60	0.3442048820	9002	100	0.3442999880	2048	140	0.3444513379	3030
21	0.3441567994	7355	61	0.3442068590	3695	101	0.3443035546	6016	141	0.3444548413	218
22	0.3441575493	5342	62	0.3442090751	4369	102	0.3443068306	6681	142	0.3444559122	9667
23	0.3441584146	2722	63	0.3442111243	8328	103	0.3443104766	1383	143	0.3444599079	7846
24	0.3441590418	526	64	0.3442129296	9185	104	0.3443130401	1865	144	0.3444645463	4851
25	0.3441592368	9975	65	0.3442150430	3512	105	0.3443167567	6199	145	0.3444696923	3213
26	0.3441599777	7538	66	0.3442174092	4552	106	0.3443201689	6498	146	0.3444733266	35
27	0.3441608640	5159	67	0.3442195947	8145	107	0.3443239650	1566	147	0.3444744028	9484
28	0.3441618794	2905	68	0.3442215182	9368	108	0.3443266329	1682	148	0.3444785167	8029
29	0.3441626111	343	69	0.3442237679	3329	109	0.3443304996	6382	149	0.3444832913	4668
30	0.3441628379	9792	70	0.3442262841	4735	110	0.3443340481	6315	150	0.3444885872	3396
31	0.3441636971	7721	71	0.3442286060	7962	111	0.3443379942	1749	151	0.3444934340	9301
32	0.3441647197	4976	72	0.3442306478	9551	112	0.3443407665	1499	152	0.3444976659	8212
33	0.3441658852	3088	73	0.3442312017	102	113	0.3443447832	6565	153	0.3445025768	4485
34	0.3441667214	160	74	0.3442330337	3146	114	0.3443484680	6132	154	0.3445080226	3579
35	0.3441669800	9609	75	0.3442357001	4918	115	0.3443525641	1932	155	0.3445130056	9118
36	0.3441679575	7904	76	0.3442381582	7779	116	0.3443554409	1316	156	0.3445173557	8395
37	0.3441691165	4793	77	0.3442403183	9734	117	0.3443596076	6748	157	0.3445224028	4302
38	0.3441704321	3271	78	0.3442409040	285	118	0.3443634286	5949	158	0.3445279985	3762
39	0.3441716633	9426	79	0.3442428406	2963	119	0.3443676747	2115	159	0.3445331177	8935
40	0.3441727590	8087	80	0.3442456569	5101	120	0.3443706560	1133	160	0.3445375859	8578

161	0.3445427691	4119	201	0.3447574740	5592	241	0.3450409501	7422	281	0.3453512717	3628
162	0.3445485148	3945	202	0.3447639545	7105	242	0.3450487909	5275	282	0.3453612891	4436
163	0.3445537701	8752	203	0.3447711283	959	243	0.3450574619	2789	283	0.3453704247	8261
164	0.3445583565	8761	204	0.3447761481	2289	244	0.3450635244	459	284	0.3453783768	9252
165	0.3445636759	3936	205	0.3447833924	5775	245	0.3450653746	9908	285	0.3453875764	3445
166	0.3445695715	4128	206	0.3447900089	6922	246	0.3450722660	7605	286	0.3453977433	4619
167	0.3445749630	8569	207	0.3447973325	1142	247	0.3450802426	5092	287	0.3454070147	8078
168	0.3445796675	8944	208	0.3448024567	2106	248	0.3450890633	2972	288	0.3454150846	9435
169	0.3445851230	3753	209	0.3448098507	5958	249	0.3450952301	276	289	0.3454244199	3262
170	0.3445911685	4311	210	0.3448166033	6739	250	0.3450971120	9725	290	0.3454347363	4802
171	0.3445966962	8386	211	0.3448240766	1325	251	0.3451041212	7788	291	0.3454441435	7895
172	0.3446015188	9127	212	0.3448293051	1923	252	0.3451122338	4909	292	0.3454523312	9618
173	0.3446071105	3570	213	0.3448368489	6141	253	0.3451212042	3155	293	0.3454545390	169
174	0.3446133058	4494	214	0.3448437376	6556	254	0.3451274751	93	294	0.3454618023	3079
175	0.3446189697	8203	215	0.3448513607	1508	255	0.3451293887	9542	295	0.3454722681	4985
176	0.3446239103	9310	216	0.3448566934	1740	256	0.3451365159	7971	296	0.3454818111	7712
177	0.3446296382	3387	217	0.3448643870	6324	257	0.3451447644	4726	297	0.3454901166	9801
178	0.3446359834	4677	218	0.3448714117	6373	258	0.3451538844	3338	298	0.3454923561	352
179	0.3446417834	8020	219	0.3448791846	1691	259	0.3451622048	9359	299	0.3454997234	2896
180	0.3446468422	9493	220	0.3448846216	1557	260	0.3451694499	8154	300	0.3455103387	5168
181	0.3446482074	44	221	0.3448924649	6507	261	0.3451778343	4543	301	0.3455200175	7529
182	0.3446527062	3204	222	0.3448996257	6190	262	0.3451871039	3521	302	0.3455307119	535
183	0.3446592013	4860	223	0.3449075483	1874	263	0.3451955602	9176	303	0.3455381833	2713
184	0.3446651374	7837	224	0.3449130896	1374	264	0.3452029232	8337	304	0.3455489480	5351
185	0.3446703142	9676	225	0.3449210826	6690	265	0.3452114435	4360	305	0.3455587625	7346
186	0.3446717118	227	226	0.3449283794	6007	266	0.3452208627	3704	306	0.3455696063	718
187	0.3446763143	3021	227	0.3449364517	2057	267	0.3452294549	8993	307	0.3455771818	2530
188	0.3446829593	5043	228	0.3449420973	1191	268	0.3452369357	8520	308	0.3455880959	5534
189	0.3446890315	7654	229	0.3449502400	6873	269	0.3452455919	4177	309	0.3455980461	7163
190	0.3446943264	9859	230	0.3449576728	5824	270	0.3452551606	3887	310	0.3456090393	901
191	0.3446957558	410	231	0.3449658948	2240	271	0.3452638887	8810	311	0.3456167188	2347
192	0.3447004627	2838	232	0.3449716447	1008	272	0.3452714874	8703	312	0.3456277823	5717
193	0.3447072574	5226	233	0.3449799371	7056	273	0.3452802794	3994	313	0.3456378682	6980
194	0.3447134658	7471	234	0.3449875059	5641	274	0.3452899977	4070	314	0.3456490109	1084
195	0.3447203399	593	235	0.3449958776	2423	275	0.3452988617	8627	315	0.3456567944	2164
196	0.3447251511	2655	236	0.3450017317	825	276	0.3453065782	8886	316	0.3456680073	5900
197	0.3447320957	5409	237	0.3450101739	7239	277	0.3453155061	3811	317	0.3456782288	6797
198	0.3447384401	7288	238	0.3450178786	5458	278	0.3453253739	4253	318	0.3456895208	1267
199	0.3447454640	776	239	0.3450264000	2606	279	0.3453343737	8444	319	0.3456974083	1981
200	0.3447503796	2472	240	0.3450323583	642	280	0.3453422080	9069	320	0.3457087706	6083

321	0.3457191278	6614	361	0.3461331453	151	401	0.3465984010	3137	441	0.3471123996	6123
322	0.3457305692	1450	362	0.3461358677	9600	402	0.3466126758	4927	442	0.3471280921	1941
323	0.3457385607	1798	363	0.3461460000	7913	403	0.3466256785	7770	443	0.3471390437	1307
324	0.3457500723	6266	364	0.3461577129	4784	404	0.3466369850	9743	444	0.3471548061	6757
325	0.3457605652	6431	365	0.3461706465	3280	405	0.3466400321	294	445	0.3471691603	5940
326	0.3457721558	1633	366	0.3461824311	9417	406	0.3466500514	2954	446	0.3471850014	2124
327	0.3457802513	1615	367	0.3461926809	8096	407	0.3466644750	5110	447	0.3471960565	1124
328	0.3457919122	6449	368	0.3462045292	4601	408	0.3466776130	7587	448	0.3472119676	6940
329	0.3458025407	6248	369	0.3462176119	3463	409	0.3466890368	9926	449	0.3472264568	5757
330	0.3458142807	1816	370	0.3462295319	9234	410	0.3466921155	477	450	0.3472424465	2307
331	0.3458224801	1432	371	0.3462398992	8279	411	0.3467022384	2771	451	0.3472536051	941
332	0.3458342903	6632	372	0.3462518829	4418	412	0.3467168109	5293	452	0.3472696648	7123
333	0.3458450544	6065	373	0.3462651147	3646	413	0.3467300841	7404	453	0.3472842889	5574
334	0.3458569437	1999	374	0.3462771702	9051	414	0.3467447354	660	454	0.3473004272	2490
335	0.3458652471	1249	375	0.3462876549	8462	415	0.3467549620	2588	455	0.3473116893	758
336	0.3458772065	6815	376	0.3462997741	4235	416	0.3467696834	5476	456	0.3473278975	7306
337	0.3458881063	5882	377	0.3463131549	3829	417	0.3467830918	7221	457	0.3473426566	5391
338	0.3459001448	2182	378	0.3463253458	8868	418	0.3467978919	843	458	0.3473589434	2673
339	0.3459085521	1066	379	0.3463359480	8645	419	0.3468082221	2405	459	0.3473703089	575
340	0.3459206608	6998	380	0.3463482025	4052	420	0.3468230923	5659	460	0.3473866657	7489
341	0.3459316961	5699	381	0.3463617324	4012	421	0.3468366359	7038	461	0.3474015597	5208
342	0.3459438838	2365	382	0.3463740586	8685	422	0.3468515848	1026	462	0.3474179951	2856
343	0.3459523951	883	383	0.3463847782	8828	423	0.3468620186	2222	463	0.3474294640	392
344	0.3459646530	7181	384	0.3463971681	3869	424	0.3468770376	5842	464	0.3474329605	9841
345	0.3459758239	5516	385	0.3464108471	4195	425	0.3468907163	6855	465	0.3474459693	7672
346	0.3459881608	2548	386	0.3464233086	8502	426	0.3469058140	1209	466	0.3474609982	5025
347	0.3459967760	700	387	0.3464341456	9011	427	0.3469163514	2039	467	0.3474775821	3039
348	0.3460091832	7364	388	0.3464466709	3686	428	0.3469315191	6025	468	0.3474891544	209
349	0.3460204895	5333	389	0.3464604988	4378	429	0.3469453330	6672	469	0.3474926823	9658
350	0.3460329757	2731	390	0.3464730957	8319	430	0.3469605794	1392	470	0.3475058081	7855
351	0.3460416947	517	391	0.3464840501	9194	431	0.3469712204	1856	471	0.3475209719	4842
352	0.3460443538	9966	392	0.3464967107	3503	432	0.3469865369	6208	472	0.3475377042	3222
353	0.3460542511	7547	393	0.3465106876	4561	433	0.3470004858	6489	473	0.3475481020	26
354	0.3460656930	5150	394	0.3465234198	8136	434	0.3470158810	1575	474	0.3475529394	9475
355	0.3460783283	2914	395	0.3465344916	9377	435	0.3470266255	1673	475	0.3475661821	8038
356	0.3460871512	334	396	0.3465472874	3320	436	0.3470420907	6391	476	0.3475814807	4659
357	0.3460898419	9783	397	0.3465614132	4744	437	0.3470561747	6306	477	0.3475983615	3405
358	0.3460998567	7730	398	0.3465742808	7953	438	0.3470717186	1758	478	0.3476137315	9292
359	0.3461114341	4967	399	0.3465854699	9560	439	0.3470825667	1490	479	0.3476270912	8221
360	0.3461242186	3097	400	0.3465884854	111	440	0.3470981805	6574	480	0.3476425246	4476

1	{183}
2	{183, 4450}
3, 4	{183, 366, 4450}
5	{183, 366, 4267}
6 – 8	{183, 366, 4084}
9	{183, 366, 3901}
10 – 12	{183, 366, 3718}
13 – 16	{183, 366, 3352}
17	{183, 366, 3169}
18 – 20	{183, 366, 2986}
21	{183, 366, 2803}
22 – 24	{183, 366, 2620}
25	{183, 366, 2437, 2620}
26	{183, 366, 2437}
27, 28	{183, 366, 2254, 2437}
29	{183, 366, 2254}
30	{183, 366, 2071, 2254}
31	{183, 366, 2071}
32, 33	{183, 366, 1888, 2071}
34	{183, 366, 1888}
35	{183, 366, 1705, 1888}
36	{183, 366, 1705}
37	{183, 366, 1522, 1705}
38	{183, 366, 1522}
39	{183, 366, 1339, 1522}
40	{183, 366, 1339}
41	{183, 366, 1156, 1339}
42	{183, 366, 1156}
43	{183, 366, 973, 1156}
44	{183, 366, 973}
45	{183, 366, 790, 973}
46	{183, 366, 790}
47	{183, 366, 607, 790}
48	{183, 366, 607}
49	{183, 366, 424, 607}
50	{183, 366, 424}
51	{183, 241, 366, 424}
52	{183, 241, 366}
53	{58, 183, 241, 366}
54	{58, 183, 366}
55 – 99	{58, 125, 183, 366}